

Signify Classified - Internal  
Cooper Lighting Solutions Photometric Lab  
1121 Highway 74 South  
Peachtree City, GA 30269



Scaled data based on original data using  
LM-79-2019 Approved Method: Electrical and Photometric Measurements of Solid-  
State Lighting Products

Test Report Prepared for  
Cooper Lighting Solutions

Brand: STREETWORKS

Report Number: P362273

Luminaire Tested: NVN-SA1C-722-U-SLL

Issue Date: 3/3/2020

**Test Information**

Test Method: LM-79-2019  
Report Number: P362273  
TEST IS SCALED FROM IESNA LM-79-08 TEST DATA (G2-1903-205-26)  
Test Lab: INNOVATION CENTER  
Issue Date: 3/3/2020  
Manufacturer: COOPER LIGHTING SOLUTIONS  
Product Line: STREETWORKS  
Catalog Number: NVN-SA1C-722-U-SLL  
Description: NAVION ROADWAY AND AREA LUMINAIRE  
(1) 70 CRI, 2200K, 1050mA LIGHTSQUARE WITH 16 LEDS AND SPILL LIGHT  
ELIMINATOR LEFT OPTICS  
Light Source: -  
Ballast/Driver: ELECTRONIC DRIVER

**Summary**

Lumens per Lamp: N/A  
Luminaire Lumens: 4714 lumens  
Efficiency: N/A  
Efficacy: 79.9 lumens/watt  
Luminous Opening: Rectangular (W 0.5' x L: 0.5' x H: 0')  
IES Classification: Type III - Medium  
BUG Rating: B1 - U0 - G2

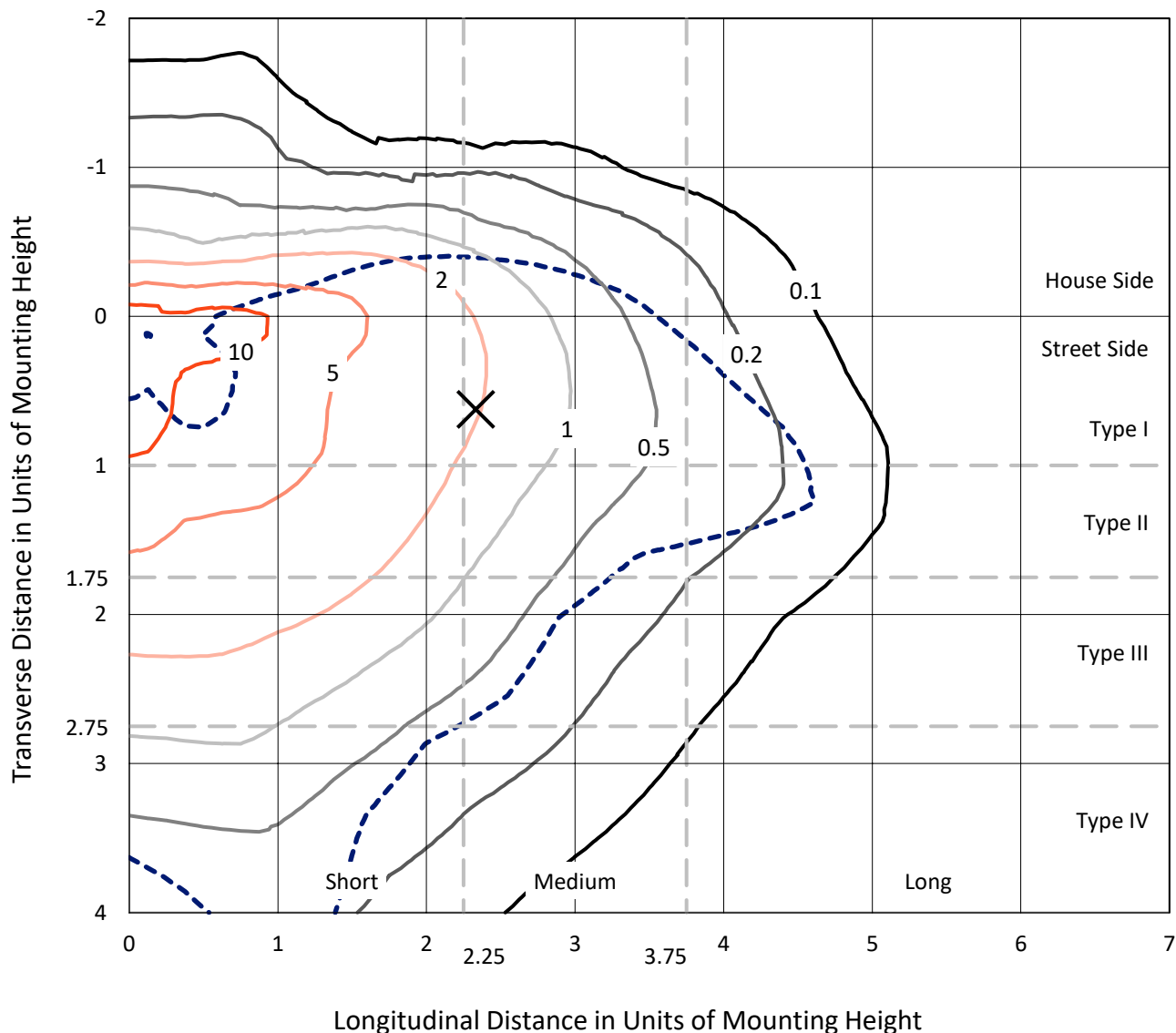
Input Watts (W): 59  
Input Voltage (V): NR  
Input Current (Ain): NR  
Voltage Rise (V): NR  
Power Factor: NR  
Total Harmonic Distortion (THDi): NR  
Frequency (hertz): 60  
Stabilization Time: NR  
Operation Time: NR  
Ambient Temperature (°C): NR  
Test Distance: 28.75 FT



REPORT NUMBER: P362273  
 CATALOG NUMBER: NVN-SA1C-722-U-SLL

### Iso-Footcandle Lines of Horizontal Illumination

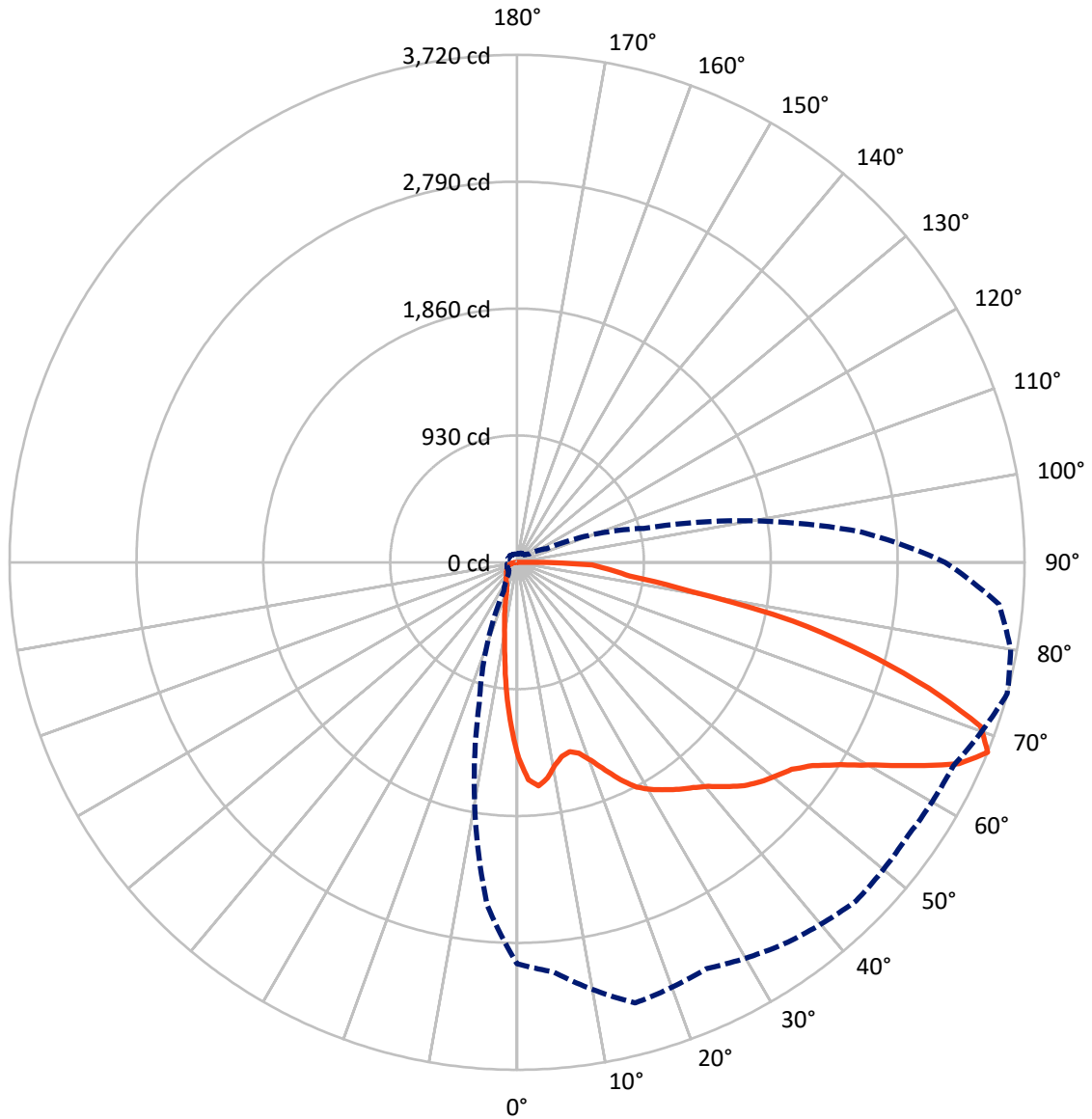
✕ Max cd  
 - - - 1/2 Max cd



Based on 10 foot mounting height. Maximum calculated value = 18.1 fc  
 Type III - Medium - N/A

REPORT NUMBER: P362273  
CATALOG NUMBER: NVN-SA1C-722-U-SLL

### Luminous Intensity Polar Plot



— Vertical Plane Through 75-Deg Lateral      - - - Horizontal Cone Through 67.5-Deg Vertical

REPORT NUMBER: P362273  
 CATALOG NUMBER: NVN-SA1C-722-U-SLL

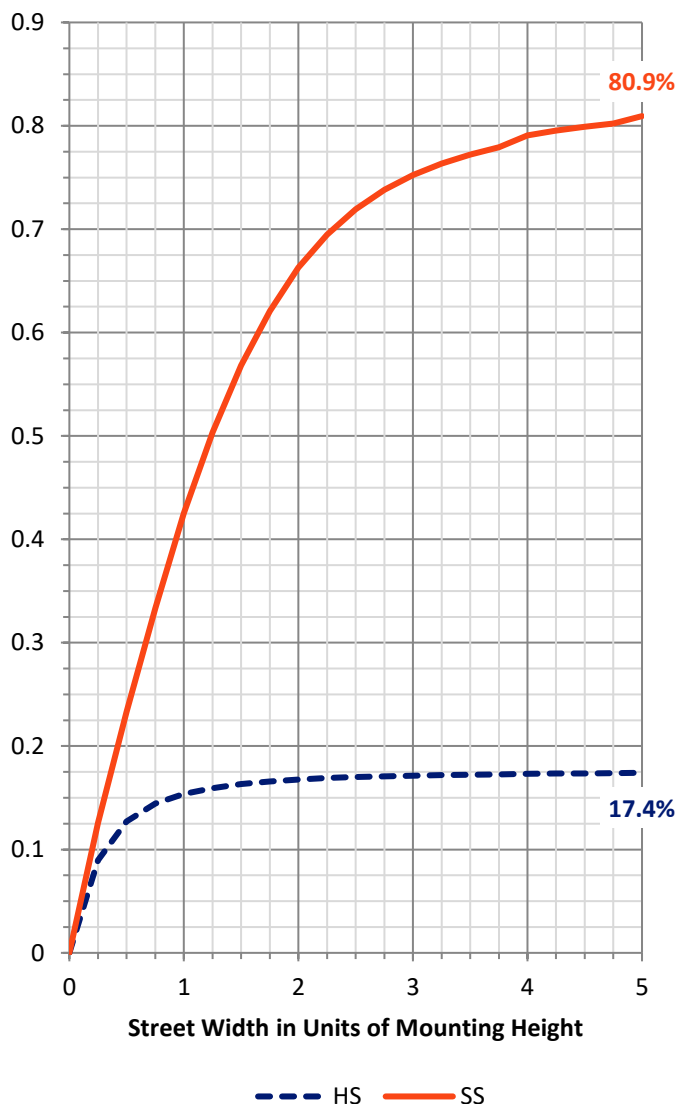
**FLUX DISTRIBUTION:**

|                    |           | Downward | Upward | Total  |
|--------------------|-----------|----------|--------|--------|
| <b>House Side</b>  | Lumens    | 830.3    | 0.0    | 830.3  |
|                    | % Fixture | 17.6     | 0.0    | 17.6   |
| <b>Street Side</b> | Lumens    | 3883.7   | 0.0    | 3883.7 |
|                    | % Fixture | 82.4     | 0.0    | 82.4   |
| <b>Total</b>       | Lumens    | 4714.0   | 0.0    | 4714.0 |
|                    | % Fixture | 100.0    | 0.0    | 100.0  |

**ZONAL LUMENS:**

| Zone      | Lumens | % Fixture |
|-----------|--------|-----------|
| 0°-10°    | 110.8  | 2.4       |
| 10°-20°   | 230.3  | 4.9       |
| 20°-30°   | 327.5  | 6.9       |
| 30°-40°   | 471.9  | 10.0      |
| 40°-50°   | 665.0  | 14.1      |
| 50°-60°   | 924.5  | 19.6      |
| 60°-70°   | 1118.0 | 23.7      |
| 70°-80°   | 687.2  | 14.6      |
| 80°-90°   | 178.8  | 3.8       |
| 90°-100°  | 0.0    | 0.0       |
| 100°-110° | 0.0    | 0.0       |
| 110°-120° | 0.0    | 0.0       |
| 120°-130° | 0.0    | 0.0       |
| 130°-140° | 0.0    | 0.0       |
| 140°-150° | 0.0    | 0.0       |
| 150°-160° | 0.0    | 0.0       |
| 160°-170° | 0.0    | 0.0       |
| 170°-180° | 0.0    | 0.0       |
| 0°-90°    | 4714.0 | 100.0     |
| 0°-180°   | 4714.0 | 100.0     |

**Coefficient of Utilization**

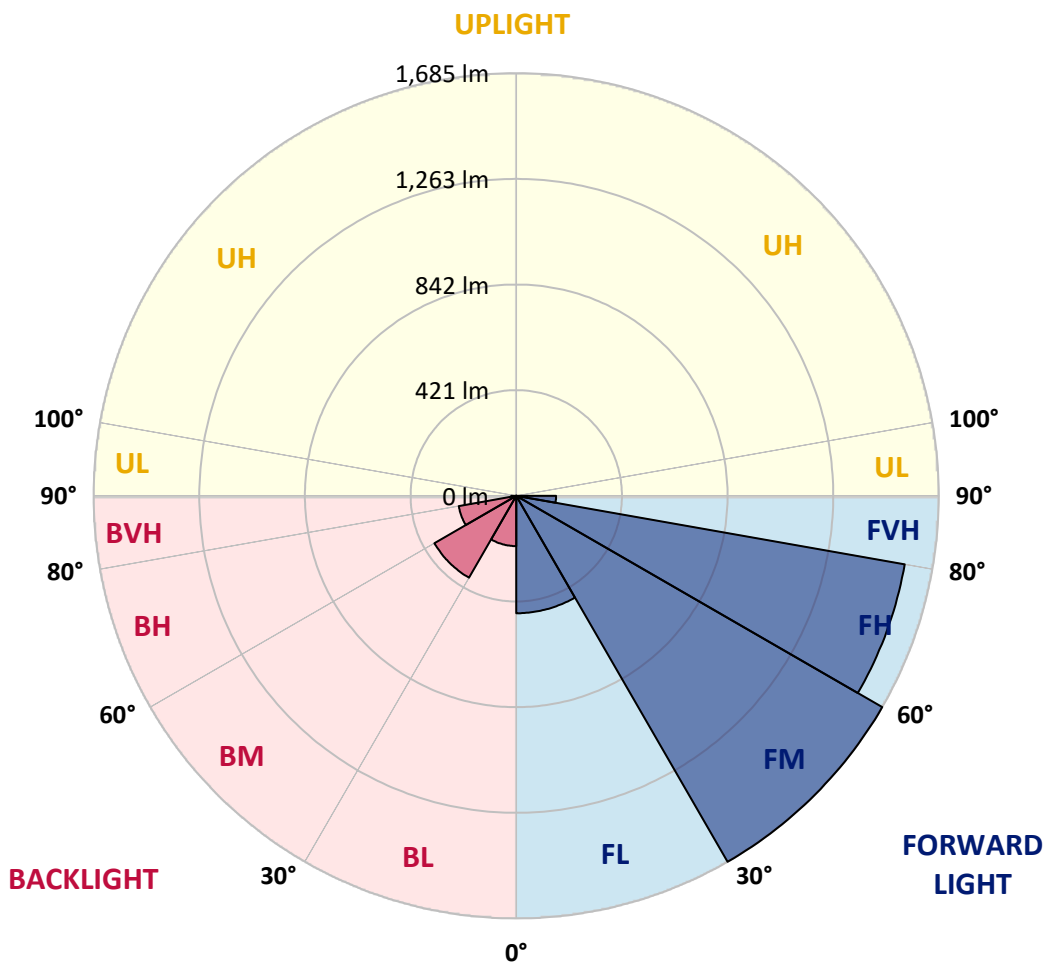


REPORT NUMBER: P362273  
 CATALOG NUMBER: NVN-SA1C-722-U-SLL

**LUMINAIRE CLASSIFICATION SYSTEM LUMEN TABLE AND BUG RATING:**

| Zone           | Lumens | % Fixture | Zone Rating/Lumen Limit |      |         |
|----------------|--------|-----------|-------------------------|------|---------|
|                |        |           | B                       | U    | G       |
| FL (0°-30°)    | 468.1  | 9.9       |                         |      |         |
| FM (30°-60°)   | 1684.5 | 35.7      |                         |      |         |
| FH (60°-80°)   | 1572.4 | 33.4      |                         |      | G1/1800 |
| FVH (80°-90°)  | 158.7  | 3.4       |                         |      | G2/225  |
| BL (0°-30°)    | 200.5  | 4.3       | B1/500                  |      |         |
| BM (30°-60°)   | 376.9  | 8.0       | B1/1000                 |      |         |
| BH (60°-80°)   | 232.8  | 4.9       | B1/500                  |      | G1/500  |
| BVH (80°-90°)  | 20.1   | 0.4       |                         |      | G1/100  |
| UL (90°-100°)  | 0.0    | 0.0       |                         | U0/0 |         |
| UH (100°-180°) | 0.0    | 0.0       |                         | U0/0 |         |

**BUG Rating: B1-U0-G2**  
 Type III Medium





REPORT NUMBER: P362273

CATALOG NUMBER: NVN-SA1C-722-U-SLL

**CANDELA DISTRIBUTION (FULL):**

|        | 0°     | 5°     | 10°    | 15°    | 20°    | 25°    | 30°    | 35°    | 40°    | 45°    | 50°    |
|--------|--------|--------|--------|--------|--------|--------|--------|--------|--------|--------|--------|
| 0°     | 1436.1 | 1436.1 | 1436.1 | 1436.1 | 1436.1 | 1436.1 | 1436.1 | 1436.1 | 1436.1 | 1436.1 | 1436.1 |
| 2.5°   | 1530.8 | 1550.9 | 1564.9 | 1578.6 | 1589.4 | 1599.9 | 1615.4 | 1630.8 | 1633.8 | 1636.7 | 1630.6 |
| 5°     | 1521.7 | 1570.9 | 1612.7 | 1654.4 | 1693.0 | 1731.7 | 1754.8 | 1778.0 | 1782.7 | 1787.5 | 1772.9 |
| 7.5°   | 1424.3 | 1496.8 | 1569.4 | 1642.0 | 1708.5 | 1775.0 | 1815.5 | 1855.9 | 1865.1 | 1874.1 | 1850.4 |
| 10°    | 1313.4 | 1397.9 | 1487.0 | 1576.2 | 1663.8 | 1751.5 | 1810.1 | 1868.7 | 1880.4 | 1892.1 | 1862.5 |
| 12.5°  | 1229.2 | 1321.4 | 1416.5 | 1511.7 | 1604.3 | 1696.6 | 1757.3 | 1818.0 | 1832.5 | 1847.0 | 1825.5 |
| 15°    | 1196.8 | 1297.8 | 1387.3 | 1476.9 | 1557.5 | 1638.0 | 1687.7 | 1737.3 | 1743.3 | 1749.2 | 1745.8 |
| 17.5°  | 1229.2 | 1340.6 | 1421.6 | 1502.5 | 1546.4 | 1590.1 | 1610.1 | 1629.9 | 1636.5 | 1642.9 | 1651.6 |
| 20°    | 1324.0 | 1444.2 | 1501.4 | 1558.3 | 1556.4 | 1554.3 | 1544.7 | 1534.9 | 1533.2 | 1531.5 | 1556.0 |
| 22.5°  | 1459.3 | 1599.0 | 1621.8 | 1644.4 | 1591.4 | 1538.5 | 1506.3 | 1473.8 | 1467.4 | 1460.8 | 1486.8 |
| 25°    | 1618.2 | 1766.9 | 1762.8 | 1758.4 | 1657.6 | 1556.6 | 1495.1 | 1433.7 | 1426.5 | 1419.4 | 1441.6 |
| 27.5°  | 1791.0 | 1933.1 | 1906.0 | 1878.9 | 1741.8 | 1604.8 | 1515.7 | 1426.5 | 1419.4 | 1412.2 | 1431.8 |
| 30°    | 1926.2 | 2055.1 | 2011.5 | 1968.0 | 1812.9 | 1657.8 | 1551.9 | 1445.9 | 1434.3 | 1422.4 | 1446.5 |
| 32.5°  | 2040.6 | 2150.3 | 2091.8 | 2033.4 | 1870.6 | 1707.7 | 1593.1 | 1478.5 | 1460.3 | 1442.0 | 1474.2 |
| 35°    | 2159.7 | 2245.2 | 2163.1 | 2080.7 | 1922.0 | 1763.1 | 1642.0 | 1520.6 | 1498.1 | 1475.7 | 1520.0 |
| 37.5°  | 2293.7 | 2364.7 | 2246.8 | 2128.6 | 1979.9 | 1831.2 | 1715.1 | 1598.8 | 1575.8 | 1552.8 | 1609.3 |
| 40°    | 2435.2 | 2494.4 | 2337.0 | 2179.7 | 2043.2 | 1906.8 | 1816.3 | 1725.6 | 1703.8 | 1681.7 | 1750.3 |
| 42.5°  | 2559.0 | 2602.2 | 2421.1 | 2240.0 | 2119.5 | 1998.9 | 1935.2 | 1871.3 | 1871.1 | 1870.8 | 1940.3 |
| 45°    | 2652.3 | 2689.8 | 2491.2 | 2292.4 | 2194.0 | 2095.4 | 2062.2 | 2029.1 | 2055.6 | 2082.2 | 2145.2 |
| 47.5°  | 2729.8 | 2755.2 | 2550.0 | 2344.6 | 2279.2 | 2213.8 | 2218.7 | 2223.6 | 2277.7 | 2331.8 | 2372.3 |
| 50°    | 2818.4 | 2797.8 | 2603.3 | 2408.6 | 2388.5 | 2368.3 | 2412.4 | 2456.3 | 2518.5 | 2580.5 | 2608.0 |
| 52.5°  | 2914.3 | 2859.8 | 2675.7 | 2491.4 | 2514.0 | 2536.6 | 2626.3 | 2716.0 | 2778.8 | 2841.6 | 2851.9 |
| 55°    | 3086.8 | 3003.3 | 2808.8 | 2614.1 | 2657.6 | 2701.0 | 2832.7 | 2964.3 | 3013.3 | 3062.3 | 3066.0 |
| 57.5°  | 3281.1 | 3207.0 | 2995.2 | 2783.3 | 2830.1 | 2876.8 | 3028.9 | 3180.8 | 3233.8 | 3286.5 | 3279.2 |
| 60°    | 3355.9 | 3359.5 | 3172.1 | 2984.6 | 3031.7 | 3078.8 | 3227.0 | 3375.1 | 3436.0 | 3496.7 | 3480.5 |
| 62.5°  | 3280.5 | 3368.9 | 3268.8 | 3168.6 | 3211.3 | 3253.9 | 3399.1 | 3544.2 | 3606.6 | 3668.9 | 3640.7 |
| 65°    | 3131.4 | 3219.1 | 3263.9 | 3308.8 | 3322.9 | 3337.1 | 3472.6 | 3607.9 | 3655.8 | 3703.4 | 3689.1 |
| 67.5°  | 2941.8 | 3012.7 | 3178.2 | 3343.5 | 3315.0 | 3286.5 | 3350.1 | 3413.6 | 3462.8 | 3512.0 | 3503.8 |
| 70°    | 2722.3 | 2806.7 | 3027.4 | 3248.1 | 3108.2 | 2968.2 | 2942.0 | 2915.8 | 2969.0 | 3021.9 | 2989.1 |
| 72.5°  | 2328.5 | 2456.0 | 2691.4 | 2926.6 | 2668.9 | 2411.3 | 2321.8 | 2232.2 | 2299.5 | 2366.8 | 2314.6 |
| 75°    | 1758.8 | 1927.9 | 2187.9 | 2447.8 | 2140.5 | 1833.1 | 1713.6 | 1594.1 | 1651.9 | 1709.8 | 1674.0 |
| 77.5°  | 1223.2 | 1435.2 | 1691.3 | 1947.5 | 1635.0 | 1322.3 | 1233.5 | 1144.6 | 1161.9 | 1179.1 | 1173.0 |
| 80°    | 834.0  | 973.4  | 1152.1 | 1330.6 | 1122.5 | 914.5  | 921.4  | 928.2  | 920.1  | 911.8  | 923.9  |
| 82.5°  | 523.0  | 621.2  | 759.2  | 896.9  | 786.5  | 676.0  | 739.4  | 802.7  | 771.6  | 740.3  | 752.0  |
| 85°    | 294.6  | 354.5  | 489.5  | 624.2  | 581.8  | 539.2  | 576.3  | 613.3  | 565.0  | 516.8  | 538.1  |
| 87.5°  | 56.2   | 93.5   | 270.8  | 448.0  | 406.7  | 365.4  | 317.6  | 269.7  | 205.8  | 141.9  | 207.3  |
| 90°    | 0.0    | 0.0    | 0.0    | 0.0    | 0.0    | 0.0    | 0.0    | 0.0    | 0.0    | 0.0    | 0.0    |
| 92.5°  | 0.0    | 0.0    | 0.0    | 0.0    | 0.0    | 0.0    | 0.0    | 0.0    | 0.0    | 0.0    | 0.0    |
| 95°    | 0.0    | 0.0    | 0.0    | 0.0    | 0.0    | 0.0    | 0.0    | 0.0    | 0.0    | 0.0    | 0.0    |
| 97.5°  | 0.0    | 0.0    | 0.0    | 0.0    | 0.0    | 0.0    | 0.0    | 0.0    | 0.0    | 0.0    | 0.0    |
| 100°   | 0.0    | 0.0    | 0.0    | 0.0    | 0.0    | 0.0    | 0.0    | 0.0    | 0.0    | 0.0    | 0.0    |
| 102.5° | 0.0    | 0.0    | 0.0    | 0.0    | 0.0    | 0.0    | 0.0    | 0.0    | 0.0    | 0.0    | 0.0    |
| 105°   | 0.0    | 0.0    | 0.0    | 0.0    | 0.0    | 0.0    | 0.0    | 0.0    | 0.0    | 0.0    | 0.0    |
| 107.5° | 0.0    | 0.0    | 0.0    | 0.0    | 0.0    | 0.0    | 0.0    | 0.0    | 0.0    | 0.0    | 0.0    |
| 110°   | 0.0    | 0.0    | 0.0    | 0.0    | 0.0    | 0.0    | 0.0    | 0.0    | 0.0    | 0.0    | 0.0    |



REPORT NUMBER: P362273  
 CATALOG NUMBER: NVN-SA1C-722-U-SLL

**CANDELA DISTRIBUTION (continued):**

|        | 0°  | 5°  | 10° | 15° | 20° | 25° | 30° | 35° | 40° | 45° | 50° |
|--------|-----|-----|-----|-----|-----|-----|-----|-----|-----|-----|-----|
| 112.5° | 0.0 | 0.0 | 0.0 | 0.0 | 0.0 | 0.0 | 0.0 | 0.0 | 0.0 | 0.0 | 0.0 |
| 115°   | 0.0 | 0.0 | 0.0 | 0.0 | 0.0 | 0.0 | 0.0 | 0.0 | 0.0 | 0.0 | 0.0 |
| 117.5° | 0.0 | 0.0 | 0.0 | 0.0 | 0.0 | 0.0 | 0.0 | 0.0 | 0.0 | 0.0 | 0.0 |
| 120°   | 0.0 | 0.0 | 0.0 | 0.0 | 0.0 | 0.0 | 0.0 | 0.0 | 0.0 | 0.0 | 0.0 |
| 122.5° | 0.0 | 0.0 | 0.0 | 0.0 | 0.0 | 0.0 | 0.0 | 0.0 | 0.0 | 0.0 | 0.0 |
| 125°   | 0.0 | 0.0 | 0.0 | 0.0 | 0.0 | 0.0 | 0.0 | 0.0 | 0.0 | 0.0 | 0.0 |
| 127.5° | 0.0 | 0.0 | 0.0 | 0.0 | 0.0 | 0.0 | 0.0 | 0.0 | 0.0 | 0.0 | 0.0 |
| 130°   | 0.0 | 0.0 | 0.0 | 0.0 | 0.0 | 0.0 | 0.0 | 0.0 | 0.0 | 0.0 | 0.0 |
| 132.5° | 0.0 | 0.0 | 0.0 | 0.0 | 0.0 | 0.0 | 0.0 | 0.0 | 0.0 | 0.0 | 0.0 |
| 135°   | 0.0 | 0.0 | 0.0 | 0.0 | 0.0 | 0.0 | 0.0 | 0.0 | 0.0 | 0.0 | 0.0 |
| 137.5° | 0.0 | 0.0 | 0.0 | 0.0 | 0.0 | 0.0 | 0.0 | 0.0 | 0.0 | 0.0 | 0.0 |
| 140°   | 0.0 | 0.0 | 0.0 | 0.0 | 0.0 | 0.0 | 0.0 | 0.0 | 0.0 | 0.0 | 0.0 |
| 142.5° | 0.0 | 0.0 | 0.0 | 0.0 | 0.0 | 0.0 | 0.0 | 0.0 | 0.0 | 0.0 | 0.0 |
| 145°   | 0.0 | 0.0 | 0.0 | 0.0 | 0.0 | 0.0 | 0.0 | 0.0 | 0.0 | 0.0 | 0.0 |
| 147.5° | 0.0 | 0.0 | 0.0 | 0.0 | 0.0 | 0.0 | 0.0 | 0.0 | 0.0 | 0.0 | 0.0 |
| 150°   | 0.0 | 0.0 | 0.0 | 0.0 | 0.0 | 0.0 | 0.0 | 0.0 | 0.0 | 0.0 | 0.0 |
| 152.5° | 0.0 | 0.0 | 0.0 | 0.0 | 0.0 | 0.0 | 0.0 | 0.0 | 0.0 | 0.0 | 0.0 |
| 155°   | 0.0 | 0.0 | 0.0 | 0.0 | 0.0 | 0.0 | 0.0 | 0.0 | 0.0 | 0.0 | 0.0 |
| 157.5° | 0.0 | 0.0 | 0.0 | 0.0 | 0.0 | 0.0 | 0.0 | 0.0 | 0.0 | 0.0 | 0.0 |
| 160°   | 0.0 | 0.0 | 0.0 | 0.0 | 0.0 | 0.0 | 0.0 | 0.0 | 0.0 | 0.0 | 0.0 |
| 162.5° | 0.0 | 0.0 | 0.0 | 0.0 | 0.0 | 0.0 | 0.0 | 0.0 | 0.0 | 0.0 | 0.0 |
| 165°   | 0.0 | 0.0 | 0.0 | 0.0 | 0.0 | 0.0 | 0.0 | 0.0 | 0.0 | 0.0 | 0.0 |
| 167.5° | 0.0 | 0.0 | 0.0 | 0.0 | 0.0 | 0.0 | 0.0 | 0.0 | 0.0 | 0.0 | 0.0 |
| 170°   | 0.0 | 0.0 | 0.0 | 0.0 | 0.0 | 0.0 | 0.0 | 0.0 | 0.0 | 0.0 | 0.0 |
| 172.5° | 0.0 | 0.0 | 0.0 | 0.0 | 0.0 | 0.0 | 0.0 | 0.0 | 0.0 | 0.0 | 0.0 |
| 175°   | 0.0 | 0.0 | 0.0 | 0.0 | 0.0 | 0.0 | 0.0 | 0.0 | 0.0 | 0.0 | 0.0 |
| 177.5° | 0.0 | 0.0 | 0.0 | 0.0 | 0.0 | 0.0 | 0.0 | 0.0 | 0.0 | 0.0 | 0.0 |
| 180°   | 0.0 | 0.0 | 0.0 | 0.0 | 0.0 | 0.0 | 0.0 | 0.0 | 0.0 | 0.0 | 0.0 |





REPORT NUMBER: P362273

CATALOG NUMBER: NVN-SA1C-722-U-SLL

**CANDELA DISTRIBUTION (continued):**

|        | 55°    | 60°    | 65°    | 70°    | 75°    | 80°    | 85°    | 90°    | 95°    | 100°   | 105°   |
|--------|--------|--------|--------|--------|--------|--------|--------|--------|--------|--------|--------|
| 0°     | 1436.1 | 1436.1 | 1436.1 | 1436.1 | 1436.1 | 1436.1 | 1436.1 | 1436.1 | 1436.1 | 1436.1 | 1436.1 |
| 2.5°   | 1624.6 | 1621.4 | 1618.2 | 1606.7 | 1595.0 | 1577.7 | 1563.4 | 1538.5 | 1524.9 | 1504.4 | 1483.8 |
| 5°     | 1758.2 | 1737.9 | 1717.5 | 1682.5 | 1647.2 | 1608.0 | 1563.0 | 1513.0 | 1475.3 | 1426.3 | 1377.3 |
| 7.5°   | 1826.7 | 1779.2 | 1731.5 | 1664.2 | 1596.7 | 1536.0 | 1464.8 | 1398.4 | 1341.9 | 1278.2 | 1214.5 |
| 10°    | 1832.9 | 1761.6 | 1690.2 | 1602.7 | 1515.1 | 1441.4 | 1359.4 | 1285.7 | 1217.9 | 1144.8 | 1071.5 |
| 12.5°  | 1803.8 | 1728.1 | 1652.1 | 1555.8 | 1459.3 | 1375.6 | 1287.4 | 1204.9 | 1129.7 | 1049.2 | 968.5  |
| 15°    | 1742.4 | 1681.9 | 1621.2 | 1530.9 | 1440.7 | 1356.2 | 1270.7 | 1172.8 | 1087.8 | 1005.5 | 922.9  |
| 17.5°  | 1660.0 | 1631.4 | 1602.6 | 1537.4 | 1472.0 | 1398.8 | 1315.9 | 1201.1 | 1101.6 | 1012.1 | 922.6  |
| 20°    | 1580.3 | 1590.9 | 1601.2 | 1575.2 | 1549.2 | 1490.6 | 1418.2 | 1289.3 | 1162.3 | 1045.3 | 928.0  |
| 22.5°  | 1512.7 | 1563.4 | 1613.9 | 1634.0 | 1654.0 | 1618.8 | 1562.2 | 1413.1 | 1245.0 | 1092.2 | 939.3  |
| 25°    | 1463.7 | 1547.7 | 1631.8 | 1698.9 | 1765.8 | 1750.1 | 1706.6 | 1563.5 | 1354.7 | 1159.8 | 964.8  |
| 27.5°  | 1451.4 | 1554.5 | 1657.6 | 1761.6 | 1865.5 | 1880.0 | 1867.9 | 1722.1 | 1485.5 | 1243.9 | 1002.1 |
| 30°    | 1470.6 | 1575.0 | 1679.3 | 1805.9 | 1932.4 | 1990.2 | 2006.5 | 1854.2 | 1635.0 | 1341.9 | 1048.6 |
| 32.5°  | 1506.4 | 1608.8 | 1711.1 | 1849.1 | 1986.9 | 2074.3 | 2125.9 | 1975.0 | 1739.2 | 1415.8 | 1092.2 |
| 35°    | 1564.3 | 1660.0 | 1755.8 | 1899.4 | 2043.0 | 2156.1 | 2250.3 | 2099.7 | 1831.7 | 1467.4 | 1102.9 |
| 37.5°  | 1665.7 | 1748.1 | 1830.4 | 1963.1 | 2095.6 | 2242.2 | 2383.8 | 2237.1 | 1931.8 | 1517.2 | 1102.4 |
| 40°    | 1818.9 | 1877.2 | 1935.2 | 2047.4 | 2159.3 | 2343.8 | 2534.9 | 2390.4 | 2042.5 | 1571.1 | 1099.7 |
| 42.5°  | 2009.8 | 2039.8 | 2069.6 | 2158.4 | 2247.1 | 2449.9 | 2672.1 | 2540.2 | 2148.0 | 1621.2 | 1094.4 |
| 45°    | 2207.9 | 2215.8 | 2223.8 | 2279.7 | 2335.5 | 2534.0 | 2765.6 | 2652.7 | 2240.2 | 1664.8 | 1089.2 |
| 47.5°  | 2412.6 | 2385.5 | 2358.3 | 2380.6 | 2402.8 | 2598.4 | 2832.3 | 2738.1 | 2332.7 | 1713.0 | 1093.1 |
| 50°    | 2635.6 | 2560.0 | 2484.4 | 2472.7 | 2461.0 | 2662.9 | 2910.9 | 2846.7 | 2443.9 | 1783.3 | 1122.7 |
| 52.5°  | 2862.1 | 2737.5 | 2612.9 | 2566.8 | 2520.4 | 2739.8 | 3015.1 | 2981.8 | 2602.6 | 1892.2 | 1181.7 |
| 55°    | 3069.8 | 2911.3 | 2752.8 | 2690.6 | 2628.4 | 2857.4 | 3142.4 | 3180.2 | 2805.9 | 2031.5 | 1256.9 |
| 57.5°  | 3271.7 | 3092.0 | 2912.4 | 2854.8 | 2797.1 | 3030.2 | 3303.5 | 3358.3 | 3011.4 | 2165.1 | 1318.7 |
| 60°    | 3464.3 | 3286.5 | 3108.6 | 3062.5 | 3016.1 | 3245.1 | 3477.7 | 3437.7 | 3117.3 | 2227.7 | 1337.9 |
| 62.5°  | 3612.4 | 3471.1 | 3329.7 | 3305.4 | 3280.9 | 3462.4 | 3611.5 | 3406.8 | 3050.0 | 2166.1 | 1282.2 |
| 65°    | 3674.8 | 3594.3 | 3513.6 | 3536.5 | 3559.1 | 3626.7 | 3644.8 | 3316.3 | 2838.5 | 1993.4 | 1148.3 |
| 67.5°  | 3495.6 | 3512.0 | 3528.3 | 3624.1 | 3719.6 | 3673.1 | 3545.7 | 3138.0 | 2537.6 | 1748.8 | 960.1  |
| 70°    | 2956.2 | 3054.5 | 3152.7 | 3379.3 | 3605.6 | 3502.3 | 3280.1 | 2818.0 | 2175.3 | 1467.1 | 758.6  |
| 72.5°  | 2262.2 | 2372.8 | 2483.3 | 2819.5 | 3155.6 | 3060.4 | 2788.2 | 2314.6 | 1744.1 | 1171.5 | 598.8  |
| 75°    | 1638.0 | 1762.9 | 1887.7 | 2258.6 | 2629.5 | 2497.4 | 2085.6 | 1657.2 | 1324.8 | 894.3  | 463.6  |
| 77.5°  | 1166.8 | 1250.5 | 1334.2 | 1700.6 | 2066.8 | 1851.5 | 1388.3 | 1115.2 | 916.9  | 621.6  | 326.1  |
| 80°    | 935.9  | 910.3  | 884.7  | 1088.8 | 1292.9 | 1257.1 | 918.2  | 716.2  | 634.6  | 416.5  | 198.5  |
| 82.5°  | 763.5  | 700.9  | 638.3  | 734.5  | 830.6  | 825.3  | 637.2  | 525.5  | 472.3  | 289.5  | 106.7  |
| 85°    | 559.2  | 534.1  | 509.1  | 594.1  | 679.1  | 606.5  | 431.6  | 334.0  | 368.3  | 213.2  | 58.0   |
| 87.5°  | 272.7  | 311.5  | 350.2  | 450.4  | 550.5  | 413.3  | 131.0  | 64.8   | 89.7   | 59.0   | 28.1   |
| 90°    | 0.0    | 0.0    | 0.0    | 0.0    | 0.0    | 0.0    | 0.0    | 0.0    | 0.0    | 0.0    | 0.0    |
| 92.5°  | 0.0    | 0.0    | 0.0    | 0.0    | 0.0    | 0.0    | 0.0    | 0.0    | 0.0    | 0.0    | 0.0    |
| 95°    | 0.0    | 0.0    | 0.0    | 0.0    | 0.0    | 0.0    | 0.0    | 0.0    | 0.0    | 0.0    | 0.0    |
| 97.5°  | 0.0    | 0.0    | 0.0    | 0.0    | 0.0    | 0.0    | 0.0    | 0.0    | 0.0    | 0.0    | 0.0    |
| 100°   | 0.0    | 0.0    | 0.0    | 0.0    | 0.0    | 0.0    | 0.0    | 0.0    | 0.0    | 0.0    | 0.0    |
| 102.5° | 0.0    | 0.0    | 0.0    | 0.0    | 0.0    | 0.0    | 0.0    | 0.0    | 0.0    | 0.0    | 0.0    |
| 105°   | 0.0    | 0.0    | 0.0    | 0.0    | 0.0    | 0.0    | 0.0    | 0.0    | 0.0    | 0.0    | 0.0    |
| 107.5° | 0.0    | 0.0    | 0.0    | 0.0    | 0.0    | 0.0    | 0.0    | 0.0    | 0.0    | 0.0    | 0.0    |
| 110°   | 0.0    | 0.0    | 0.0    | 0.0    | 0.0    | 0.0    | 0.0    | 0.0    | 0.0    | 0.0    | 0.0    |



REPORT NUMBER: P362273  
 CATALOG NUMBER: NVN-SA1C-722-U-SLL

**CANDELA DISTRIBUTION (continued):**

|        | 55° | 60° | 65° | 70° | 75° | 80° | 85° | 90° | 95° | 100° | 105° |
|--------|-----|-----|-----|-----|-----|-----|-----|-----|-----|------|------|
| 112.5° | 0.0 | 0.0 | 0.0 | 0.0 | 0.0 | 0.0 | 0.0 | 0.0 | 0.0 | 0.0  | 0.0  |
| 115°   | 0.0 | 0.0 | 0.0 | 0.0 | 0.0 | 0.0 | 0.0 | 0.0 | 0.0 | 0.0  | 0.0  |
| 117.5° | 0.0 | 0.0 | 0.0 | 0.0 | 0.0 | 0.0 | 0.0 | 0.0 | 0.0 | 0.0  | 0.0  |
| 120°   | 0.0 | 0.0 | 0.0 | 0.0 | 0.0 | 0.0 | 0.0 | 0.0 | 0.0 | 0.0  | 0.0  |
| 122.5° | 0.0 | 0.0 | 0.0 | 0.0 | 0.0 | 0.0 | 0.0 | 0.0 | 0.0 | 0.0  | 0.0  |
| 125°   | 0.0 | 0.0 | 0.0 | 0.0 | 0.0 | 0.0 | 0.0 | 0.0 | 0.0 | 0.0  | 0.0  |
| 127.5° | 0.0 | 0.0 | 0.0 | 0.0 | 0.0 | 0.0 | 0.0 | 0.0 | 0.0 | 0.0  | 0.0  |
| 130°   | 0.0 | 0.0 | 0.0 | 0.0 | 0.0 | 0.0 | 0.0 | 0.0 | 0.0 | 0.0  | 0.0  |
| 132.5° | 0.0 | 0.0 | 0.0 | 0.0 | 0.0 | 0.0 | 0.0 | 0.0 | 0.0 | 0.0  | 0.0  |
| 135°   | 0.0 | 0.0 | 0.0 | 0.0 | 0.0 | 0.0 | 0.0 | 0.0 | 0.0 | 0.0  | 0.0  |
| 137.5° | 0.0 | 0.0 | 0.0 | 0.0 | 0.0 | 0.0 | 0.0 | 0.0 | 0.0 | 0.0  | 0.0  |
| 140°   | 0.0 | 0.0 | 0.0 | 0.0 | 0.0 | 0.0 | 0.0 | 0.0 | 0.0 | 0.0  | 0.0  |
| 142.5° | 0.0 | 0.0 | 0.0 | 0.0 | 0.0 | 0.0 | 0.0 | 0.0 | 0.0 | 0.0  | 0.0  |
| 145°   | 0.0 | 0.0 | 0.0 | 0.0 | 0.0 | 0.0 | 0.0 | 0.0 | 0.0 | 0.0  | 0.0  |
| 147.5° | 0.0 | 0.0 | 0.0 | 0.0 | 0.0 | 0.0 | 0.0 | 0.0 | 0.0 | 0.0  | 0.0  |
| 150°   | 0.0 | 0.0 | 0.0 | 0.0 | 0.0 | 0.0 | 0.0 | 0.0 | 0.0 | 0.0  | 0.0  |
| 152.5° | 0.0 | 0.0 | 0.0 | 0.0 | 0.0 | 0.0 | 0.0 | 0.0 | 0.0 | 0.0  | 0.0  |
| 155°   | 0.0 | 0.0 | 0.0 | 0.0 | 0.0 | 0.0 | 0.0 | 0.0 | 0.0 | 0.0  | 0.0  |
| 157.5° | 0.0 | 0.0 | 0.0 | 0.0 | 0.0 | 0.0 | 0.0 | 0.0 | 0.0 | 0.0  | 0.0  |
| 160°   | 0.0 | 0.0 | 0.0 | 0.0 | 0.0 | 0.0 | 0.0 | 0.0 | 0.0 | 0.0  | 0.0  |
| 162.5° | 0.0 | 0.0 | 0.0 | 0.0 | 0.0 | 0.0 | 0.0 | 0.0 | 0.0 | 0.0  | 0.0  |
| 165°   | 0.0 | 0.0 | 0.0 | 0.0 | 0.0 | 0.0 | 0.0 | 0.0 | 0.0 | 0.0  | 0.0  |
| 167.5° | 0.0 | 0.0 | 0.0 | 0.0 | 0.0 | 0.0 | 0.0 | 0.0 | 0.0 | 0.0  | 0.0  |
| 170°   | 0.0 | 0.0 | 0.0 | 0.0 | 0.0 | 0.0 | 0.0 | 0.0 | 0.0 | 0.0  | 0.0  |
| 172.5° | 0.0 | 0.0 | 0.0 | 0.0 | 0.0 | 0.0 | 0.0 | 0.0 | 0.0 | 0.0  | 0.0  |
| 175°   | 0.0 | 0.0 | 0.0 | 0.0 | 0.0 | 0.0 | 0.0 | 0.0 | 0.0 | 0.0  | 0.0  |
| 177.5° | 0.0 | 0.0 | 0.0 | 0.0 | 0.0 | 0.0 | 0.0 | 0.0 | 0.0 | 0.0  | 0.0  |
| 180°   | 0.0 | 0.0 | 0.0 | 0.0 | 0.0 | 0.0 | 0.0 | 0.0 | 0.0 | 0.0  | 0.0  |



REPORT NUMBER: P362273  
 CATALOG NUMBER: NVN-SA1C-722-U-SLL

**CANDELA DISTRIBUTION (continued):**

|        | 110°   | 115°   | 120°   | 125°   | 130°   | 135°   | 140°   | 145°   | 150°   | 155°   | 160°   |
|--------|--------|--------|--------|--------|--------|--------|--------|--------|--------|--------|--------|
| 0°     | 1436.1 | 1436.1 | 1436.1 | 1436.1 | 1436.1 | 1436.1 | 1436.1 | 1436.1 | 1436.1 | 1436.1 | 1436.1 |
| 2.5°   | 1468.6 | 1453.1 | 1435.6 | 1418.0 | 1398.1 | 1377.9 | 1366.0 | 1354.0 | 1341.0 | 1328.0 | 1313.3 |
| 5°     | 1344.9 | 1312.5 | 1275.8 | 1239.0 | 1202.6 | 1166.3 | 1146.7 | 1127.1 | 1106.3 | 1085.4 | 1067.3 |
| 7.5°   | 1167.4 | 1120.1 | 1069.2 | 1018.1 | 972.9  | 927.5  | 899.4  | 871.1  | 845.5  | 819.7  | 798.0  |
| 10°    | 1011.1 | 950.8  | 899.8  | 848.5  | 814.4  | 780.3  | 754.4  | 728.6  | 703.7  | 678.7  | 654.7  |
| 12.5°  | 908.2  | 847.9  | 815.5  | 783.1  | 754.8  | 726.6  | 696.8  | 666.8  | 632.7  | 598.4  | 573.3  |
| 15°    | 868.1  | 813.2  | 777.3  | 741.1  | 703.2  | 665.1  | 628.5  | 592.0  | 551.7  | 511.3  | 482.9  |
| 17.5°  | 850.8  | 778.9  | 728.6  | 678.1  | 628.2  | 578.2  | 535.8  | 493.4  | 449.3  | 405.2  | 376.4  |
| 20°    | 832.5  | 736.9  | 669.4  | 601.8  | 537.7  | 473.6  | 425.6  | 377.5  | 338.1  | 298.7  | 276.7  |
| 22.5°  | 815.9  | 692.3  | 607.6  | 522.8  | 447.1  | 371.3  | 324.2  | 276.9  | 252.7  | 228.6  | 219.8  |
| 25°    | 809.1  | 653.2  | 549.2  | 445.2  | 365.3  | 285.2  | 251.6  | 218.1  | 208.8  | 199.4  | 194.9  |
| 27.5°  | 810.2  | 618.4  | 500.0  | 381.5  | 309.5  | 237.5  | 214.5  | 191.5  | 185.8  | 180.0  | 177.2  |
| 30°    | 814.6  | 580.5  | 453.6  | 326.8  | 267.4  | 208.1  | 193.2  | 178.1  | 172.1  | 166.0  | 162.5  |
| 32.5°  | 819.5  | 546.6  | 417.8  | 288.9  | 240.5  | 191.9  | 179.6  | 167.2  | 161.3  | 155.5  | 151.9  |
| 35°    | 811.0  | 518.9  | 393.3  | 267.8  | 223.1  | 178.3  | 167.9  | 157.4  | 151.0  | 144.6  | 141.2  |
| 37.5°  | 796.7  | 491.0  | 374.3  | 257.5  | 211.8  | 166.0  | 158.5  | 150.8  | 144.2  | 137.4  | 134.2  |
| 40°    | 783.7  | 467.4  | 360.2  | 252.7  | 205.6  | 158.3  | 151.9  | 145.5  | 138.7  | 131.7  | 128.0  |
| 42.5°  | 773.1  | 451.6  | 346.2  | 240.9  | 200.0  | 158.9  | 149.8  | 140.6  | 134.0  | 127.4  | 123.3  |
| 45°    | 765.2  | 441.2  | 335.3  | 229.4  | 194.7  | 160.0  | 148.5  | 137.0  | 130.4  | 123.6  | 118.7  |
| 47.5°  | 764.4  | 435.7  | 327.6  | 219.4  | 184.7  | 149.8  | 145.1  | 140.4  | 130.8  | 121.0  | 115.3  |
| 50°    | 774.8  | 426.9  | 318.5  | 210.0  | 175.1  | 140.2  | 146.6  | 152.8  | 136.5  | 119.9  | 112.7  |
| 52.5°  | 796.5  | 411.2  | 304.2  | 197.1  | 163.4  | 129.5  | 139.5  | 149.3  | 135.1  | 120.8  | 111.6  |
| 55°    | 822.7  | 388.2  | 282.5  | 176.6  | 147.9  | 119.1  | 128.0  | 136.6  | 127.8  | 118.7  | 107.6  |
| 57.5°  | 839.1  | 359.2  | 255.2  | 151.2  | 130.6  | 110.1  | 115.2  | 120.1  | 116.5  | 112.9  | 101.6  |
| 60°    | 829.3  | 320.6  | 224.5  | 128.2  | 115.3  | 102.5  | 101.6  | 100.5  | 105.7  | 111.0  | 98.0   |
| 62.5°  | 781.4  | 280.6  | 197.3  | 114.0  | 104.4  | 94.6   | 92.5   | 90.3   | 98.9   | 107.4  | 93.7   |
| 65°    | 700.5  | 252.7  | 180.2  | 107.6  | 96.9   | 86.1   | 83.9   | 81.6   | 84.2   | 86.9   | 80.5   |
| 67.5°  | 597.8  | 235.6  | 170.4  | 105.2  | 92.2   | 79.0   | 76.3   | 73.7   | 73.1   | 72.6   | 70.3   |
| 70°    | 491.9  | 225.0  | 164.0  | 102.9  | 87.1   | 71.1   | 68.6   | 66.2   | 65.4   | 64.5   | 62.8   |
| 72.5°  | 411.2  | 223.7  | 163.2  | 102.7  | 82.9   | 63.1   | 60.9   | 58.6   | 57.7   | 56.5   | 55.2   |
| 75°    | 336.8  | 210.0  | 154.9  | 99.9   | 77.3   | 54.5   | 52.4   | 50.3   | 49.6   | 48.6   | 47.5   |
| 77.5°  | 249.9  | 173.8  | 130.2  | 86.7   | 66.2   | 45.6   | 43.5   | 41.3   | 41.1   | 40.7   | 39.8   |
| 80°    | 162.1  | 125.7  | 93.1   | 60.5   | 48.2   | 35.8   | 34.1   | 32.2   | 32.4   | 32.6   | 31.9   |
| 82.5°  | 90.1   | 73.3   | 56.9   | 40.5   | 33.0   | 25.4   | 24.7   | 23.7   | 24.3   | 24.7   | 23.7   |
| 85°    | 47.5   | 36.9   | 30.5   | 24.1   | 19.0   | 13.9   | 13.9   | 13.8   | 14.5   | 15.3   | 14.5   |
| 87.5°  | 20.5   | 13.0   | 11.1   | 9.0    | 5.1    | 0.9    | 1.1    | 1.1    | 1.5    | 1.9    | 1.7    |
| 90°    | 0.0    | 0.0    | 0.0    | 0.0    | 0.0    | 0.0    | 0.0    | 0.0    | 0.0    | 0.0    | 0.0    |
| 92.5°  | 0.0    | 0.0    | 0.0    | 0.0    | 0.0    | 0.0    | 0.0    | 0.0    | 0.0    | 0.0    | 0.0    |
| 95°    | 0.0    | 0.0    | 0.0    | 0.0    | 0.0    | 0.0    | 0.0    | 0.0    | 0.0    | 0.0    | 0.0    |
| 97.5°  | 0.0    | 0.0    | 0.0    | 0.0    | 0.0    | 0.0    | 0.0    | 0.0    | 0.0    | 0.0    | 0.0    |
| 100°   | 0.0    | 0.0    | 0.0    | 0.0    | 0.0    | 0.0    | 0.0    | 0.0    | 0.0    | 0.0    | 0.0    |
| 102.5° | 0.0    | 0.0    | 0.0    | 0.0    | 0.0    | 0.0    | 0.0    | 0.0    | 0.0    | 0.0    | 0.0    |
| 105°   | 0.0    | 0.0    | 0.0    | 0.0    | 0.0    | 0.0    | 0.0    | 0.0    | 0.0    | 0.0    | 0.0    |
| 107.5° | 0.0    | 0.0    | 0.0    | 0.0    | 0.0    | 0.0    | 0.0    | 0.0    | 0.0    | 0.0    | 0.0    |
| 110°   | 0.0    | 0.0    | 0.0    | 0.0    | 0.0    | 0.0    | 0.0    | 0.0    | 0.0    | 0.0    | 0.0    |



REPORT NUMBER: P362273  
 CATALOG NUMBER: NVN-SA1C-722-U-SLL

**CANDELA DISTRIBUTION (continued):**

|        | 110° | 115° | 120° | 125° | 130° | 135° | 140° | 145° | 150° | 155° | 160° |
|--------|------|------|------|------|------|------|------|------|------|------|------|
| 112.5° | 0.0  | 0.0  | 0.0  | 0.0  | 0.0  | 0.0  | 0.0  | 0.0  | 0.0  | 0.0  | 0.0  |
| 115°   | 0.0  | 0.0  | 0.0  | 0.0  | 0.0  | 0.0  | 0.0  | 0.0  | 0.0  | 0.0  | 0.0  |
| 117.5° | 0.0  | 0.0  | 0.0  | 0.0  | 0.0  | 0.0  | 0.0  | 0.0  | 0.0  | 0.0  | 0.0  |
| 120°   | 0.0  | 0.0  | 0.0  | 0.0  | 0.0  | 0.0  | 0.0  | 0.0  | 0.0  | 0.0  | 0.0  |
| 122.5° | 0.0  | 0.0  | 0.0  | 0.0  | 0.0  | 0.0  | 0.0  | 0.0  | 0.0  | 0.0  | 0.0  |
| 125°   | 0.0  | 0.0  | 0.0  | 0.0  | 0.0  | 0.0  | 0.0  | 0.0  | 0.0  | 0.0  | 0.0  |
| 127.5° | 0.0  | 0.0  | 0.0  | 0.0  | 0.0  | 0.0  | 0.0  | 0.0  | 0.0  | 0.0  | 0.0  |
| 130°   | 0.0  | 0.0  | 0.0  | 0.0  | 0.0  | 0.0  | 0.0  | 0.0  | 0.0  | 0.0  | 0.0  |
| 132.5° | 0.0  | 0.0  | 0.0  | 0.0  | 0.0  | 0.0  | 0.0  | 0.0  | 0.0  | 0.0  | 0.0  |
| 135°   | 0.0  | 0.0  | 0.0  | 0.0  | 0.0  | 0.0  | 0.0  | 0.0  | 0.0  | 0.0  | 0.0  |
| 137.5° | 0.0  | 0.0  | 0.0  | 0.0  | 0.0  | 0.0  | 0.0  | 0.0  | 0.0  | 0.0  | 0.0  |
| 140°   | 0.0  | 0.0  | 0.0  | 0.0  | 0.0  | 0.0  | 0.0  | 0.0  | 0.0  | 0.0  | 0.0  |
| 142.5° | 0.0  | 0.0  | 0.0  | 0.0  | 0.0  | 0.0  | 0.0  | 0.0  | 0.0  | 0.0  | 0.0  |
| 145°   | 0.0  | 0.0  | 0.0  | 0.0  | 0.0  | 0.0  | 0.0  | 0.0  | 0.0  | 0.0  | 0.0  |
| 147.5° | 0.0  | 0.0  | 0.0  | 0.0  | 0.0  | 0.0  | 0.0  | 0.0  | 0.0  | 0.0  | 0.0  |
| 150°   | 0.0  | 0.0  | 0.0  | 0.0  | 0.0  | 0.0  | 0.0  | 0.0  | 0.0  | 0.0  | 0.0  |
| 152.5° | 0.0  | 0.0  | 0.0  | 0.0  | 0.0  | 0.0  | 0.0  | 0.0  | 0.0  | 0.0  | 0.0  |
| 155°   | 0.0  | 0.0  | 0.0  | 0.0  | 0.0  | 0.0  | 0.0  | 0.0  | 0.0  | 0.0  | 0.0  |
| 157.5° | 0.0  | 0.0  | 0.0  | 0.0  | 0.0  | 0.0  | 0.0  | 0.0  | 0.0  | 0.0  | 0.0  |
| 160°   | 0.0  | 0.0  | 0.0  | 0.0  | 0.0  | 0.0  | 0.0  | 0.0  | 0.0  | 0.0  | 0.0  |
| 162.5° | 0.0  | 0.0  | 0.0  | 0.0  | 0.0  | 0.0  | 0.0  | 0.0  | 0.0  | 0.0  | 0.0  |
| 165°   | 0.0  | 0.0  | 0.0  | 0.0  | 0.0  | 0.0  | 0.0  | 0.0  | 0.0  | 0.0  | 0.0  |
| 167.5° | 0.0  | 0.0  | 0.0  | 0.0  | 0.0  | 0.0  | 0.0  | 0.0  | 0.0  | 0.0  | 0.0  |
| 170°   | 0.0  | 0.0  | 0.0  | 0.0  | 0.0  | 0.0  | 0.0  | 0.0  | 0.0  | 0.0  | 0.0  |
| 172.5° | 0.0  | 0.0  | 0.0  | 0.0  | 0.0  | 0.0  | 0.0  | 0.0  | 0.0  | 0.0  | 0.0  |
| 175°   | 0.0  | 0.0  | 0.0  | 0.0  | 0.0  | 0.0  | 0.0  | 0.0  | 0.0  | 0.0  | 0.0  |
| 177.5° | 0.0  | 0.0  | 0.0  | 0.0  | 0.0  | 0.0  | 0.0  | 0.0  | 0.0  | 0.0  | 0.0  |
| 180°   | 0.0  | 0.0  | 0.0  | 0.0  | 0.0  | 0.0  | 0.0  | 0.0  | 0.0  | 0.0  | 0.0  |



REPORT NUMBER: P362273  
 CATALOG NUMBER: NVN-SA1C-722-U-SLL

**CANDELA DISTRIBUTION (continued):**

|        | 165°   | 170°   | 175°   | 180°   | 185°   | 190°   | 195°   | 200°   | 205°   | 210°   | 215°   |
|--------|--------|--------|--------|--------|--------|--------|--------|--------|--------|--------|--------|
| 0°     | 1436.1 | 1436.1 | 1436.1 | 1436.1 | 1436.1 | 1436.1 | 1436.1 | 1436.1 | 1436.1 | 1436.1 | 1436.1 |
| 2.5°   | 1298.4 | 1284.6 | 1270.7 | 1255.4 | 1258.2 | 1246.5 | 1234.9 | 1227.5 | 1220.2 | 1217.9 | 1215.6 |
| 5°     | 1049.2 | 1033.6 | 1017.7 | 1003.6 | 1015.9 | 1007.6 | 999.3  | 998.1  | 996.8  | 996.8  | 996.6  |
| 7.5°   | 776.3  | 759.5  | 742.6  | 730.9  | 742.9  | 741.4  | 739.9  | 748.0  | 756.1  | 762.7  | 769.1  |
| 10°    | 630.8  | 610.5  | 589.9  | 572.6  | 569.6  | 560.9  | 552.0  | 553.9  | 555.6  | 562.8  | 569.9  |
| 12.5°  | 548.3  | 523.9  | 499.6  | 479.3  | 470.0  | 455.7  | 441.2  | 432.2  | 423.1  | 424.1  | 424.8  |
| 15°    | 454.2  | 430.7  | 406.9  | 389.4  | 383.5  | 372.4  | 361.3  | 350.0  | 338.5  | 333.8  | 328.9  |
| 17.5°  | 347.4  | 328.5  | 309.5  | 297.8  | 297.8  | 294.6  | 291.4  | 285.7  | 279.9  | 275.2  | 270.3  |
| 20°    | 254.6  | 244.6  | 234.5  | 229.6  | 231.1  | 231.3  | 231.3  | 234.1  | 236.9  | 235.4  | 233.9  |
| 22.5°  | 210.7  | 207.1  | 203.5  | 201.5  | 202.2  | 202.4  | 202.6  | 205.2  | 207.7  | 209.6  | 211.3  |
| 25°    | 190.2  | 187.9  | 185.6  | 184.9  | 186.6  | 186.8  | 186.8  | 188.5  | 190.2  | 192.1  | 193.9  |
| 27.5°  | 174.1  | 173.2  | 172.3  | 170.9  | 172.6  | 172.6  | 172.5  | 174.3  | 176.0  | 177.7  | 179.2  |
| 30°    | 158.9  | 159.3  | 159.4  | 159.1  | 160.2  | 161.0  | 161.5  | 162.8  | 164.0  | 165.3  | 166.6  |
| 32.5°  | 148.1  | 147.6  | 147.0  | 146.6  | 149.1  | 150.4  | 151.7  | 153.0  | 154.2  | 154.7  | 155.3  |
| 35°    | 137.8  | 136.5  | 135.1  | 134.2  | 136.5  | 138.1  | 139.8  | 142.3  | 144.6  | 144.9  | 145.3  |
| 37.5°  | 130.8  | 129.1  | 127.4  | 126.3  | 127.2  | 128.0  | 128.7  | 131.4  | 134.0  | 135.5  | 136.8  |
| 40°    | 124.2  | 122.5  | 120.8  | 119.9  | 120.4  | 120.6  | 120.8  | 122.1  | 123.3  | 126.1  | 128.7  |
| 42.5°  | 118.9  | 116.9  | 114.8  | 113.6  | 114.0  | 114.4  | 114.6  | 114.4  | 114.2  | 116.9  | 119.5  |
| 45°    | 113.6  | 111.4  | 109.1  | 107.8  | 108.0  | 108.0  | 108.0  | 107.6  | 107.1  | 108.4  | 109.7  |
| 47.5°  | 109.5  | 106.9  | 104.2  | 102.9  | 102.5  | 102.2  | 101.8  | 101.6  | 101.2  | 102.2  | 102.9  |
| 50°    | 105.4  | 102.5  | 99.5   | 98.0   | 97.1   | 96.7   | 96.3   | 96.1   | 95.7   | 96.7   | 97.4   |
| 52.5°  | 102.2  | 98.8   | 95.4   | 92.9   | 92.0   | 91.4   | 90.8   | 91.0   | 91.0   | 91.4   | 91.6   |
| 55°    | 96.5   | 93.5   | 90.3   | 88.6   | 86.9   | 86.5   | 86.1   | 86.7   | 87.1   | 87.1   | 87.1   |
| 57.5°  | 90.3   | 87.5   | 84.4   | 83.3   | 81.8   | 81.8   | 81.6   | 82.4   | 82.9   | 83.3   | 83.7   |
| 60°    | 84.8   | 81.6   | 78.4   | 77.5   | 76.9   | 76.7   | 76.5   | 77.5   | 78.2   | 79.0   | 79.7   |
| 62.5°  | 79.7   | 76.3   | 72.9   | 71.8   | 71.6   | 71.8   | 71.8   | 72.7   | 73.5   | 74.3   | 75.0   |
| 65°    | 74.1   | 70.7   | 67.1   | 66.0   | 66.3   | 66.9   | 67.5   | 68.2   | 68.8   | 69.5   | 70.3   |
| 67.5°  | 67.8   | 65.0   | 62.0   | 60.9   | 61.1   | 61.8   | 62.6   | 63.1   | 63.5   | 64.3   | 65.0   |
| 70°    | 61.1   | 58.6   | 56.2   | 55.4   | 55.2   | 56.2   | 56.9   | 57.3   | 57.7   | 58.6   | 59.4   |
| 72.5°  | 53.7   | 51.6   | 49.6   | 49.0   | 49.2   | 49.8   | 50.3   | 50.9   | 51.3   | 52.2   | 53.0   |
| 75°    | 46.2   | 44.3   | 42.4   | 42.0   | 42.4   | 43.0   | 43.5   | 43.9   | 44.3   | 45.4   | 46.4   |
| 77.5°  | 38.8   | 36.8   | 34.5   | 34.3   | 34.9   | 35.4   | 35.8   | 36.4   | 36.9   | 38.4   | 40.0   |
| 80°    | 31.1   | 28.8   | 26.4   | 26.2   | 26.8   | 27.3   | 27.9   | 28.5   | 29.0   | 30.9   | 32.6   |
| 82.5°  | 22.8   | 20.2   | 17.5   | 17.2   | 19.0   | 19.6   | 20.2   | 21.1   | 21.9   | 23.6   | 25.3   |
| 85°    | 13.8   | 11.1   | 8.5    | 8.3    | 10.0   | 10.9   | 11.9   | 13.0   | 13.9   | 15.5   | 17.0   |
| 87.5°  | 1.5    | 0.8    | 0.0    | 0.0    | 0.2    | 0.9    | 1.7    | 2.6    | 3.6    | 5.1    | 6.4    |
| 90°    | 0.0    | 0.0    | 0.0    | 0.0    | 0.0    | 0.0    | 0.0    | 0.0    | 0.0    | 0.0    | 0.0    |
| 92.5°  | 0.0    | 0.0    | 0.0    | 0.0    | 0.0    | 0.0    | 0.0    | 0.0    | 0.0    | 0.0    | 0.0    |
| 95°    | 0.0    | 0.0    | 0.0    | 0.0    | 0.0    | 0.0    | 0.0    | 0.0    | 0.0    | 0.0    | 0.0    |
| 97.5°  | 0.0    | 0.0    | 0.0    | 0.0    | 0.0    | 0.0    | 0.0    | 0.0    | 0.0    | 0.0    | 0.0    |
| 100°   | 0.0    | 0.0    | 0.0    | 0.0    | 0.0    | 0.0    | 0.0    | 0.0    | 0.0    | 0.0    | 0.0    |
| 102.5° | 0.0    | 0.0    | 0.0    | 0.0    | 0.0    | 0.0    | 0.0    | 0.0    | 0.0    | 0.0    | 0.0    |
| 105°   | 0.0    | 0.0    | 0.0    | 0.0    | 0.0    | 0.0    | 0.0    | 0.0    | 0.0    | 0.0    | 0.0    |
| 107.5° | 0.0    | 0.0    | 0.0    | 0.0    | 0.0    | 0.0    | 0.0    | 0.0    | 0.0    | 0.0    | 0.0    |
| 110°   | 0.0    | 0.0    | 0.0    | 0.0    | 0.0    | 0.0    | 0.0    | 0.0    | 0.0    | 0.0    | 0.0    |



REPORT NUMBER: P362273  
 CATALOG NUMBER: NVN-SA1C-722-U-SLL

**CANDELA DISTRIBUTION (continued):**

|        | 165° | 170° | 175° | 180° | 185° | 190° | 195° | 200° | 205° | 210° | 215° |
|--------|------|------|------|------|------|------|------|------|------|------|------|
| 112.5° | 0.0  | 0.0  | 0.0  | 0.0  | 0.0  | 0.0  | 0.0  | 0.0  | 0.0  | 0.0  | 0.0  |
| 115°   | 0.0  | 0.0  | 0.0  | 0.0  | 0.0  | 0.0  | 0.0  | 0.0  | 0.0  | 0.0  | 0.0  |
| 117.5° | 0.0  | 0.0  | 0.0  | 0.0  | 0.0  | 0.0  | 0.0  | 0.0  | 0.0  | 0.0  | 0.0  |
| 120°   | 0.0  | 0.0  | 0.0  | 0.0  | 0.0  | 0.0  | 0.0  | 0.0  | 0.0  | 0.0  | 0.0  |
| 122.5° | 0.0  | 0.0  | 0.0  | 0.0  | 0.0  | 0.0  | 0.0  | 0.0  | 0.0  | 0.0  | 0.0  |
| 125°   | 0.0  | 0.0  | 0.0  | 0.0  | 0.0  | 0.0  | 0.0  | 0.0  | 0.0  | 0.0  | 0.0  |
| 127.5° | 0.0  | 0.0  | 0.0  | 0.0  | 0.0  | 0.0  | 0.0  | 0.0  | 0.0  | 0.0  | 0.0  |
| 130°   | 0.0  | 0.0  | 0.0  | 0.0  | 0.0  | 0.0  | 0.0  | 0.0  | 0.0  | 0.0  | 0.0  |
| 132.5° | 0.0  | 0.0  | 0.0  | 0.0  | 0.0  | 0.0  | 0.0  | 0.0  | 0.0  | 0.0  | 0.0  |
| 135°   | 0.0  | 0.0  | 0.0  | 0.0  | 0.0  | 0.0  | 0.0  | 0.0  | 0.0  | 0.0  | 0.0  |
| 137.5° | 0.0  | 0.0  | 0.0  | 0.0  | 0.0  | 0.0  | 0.0  | 0.0  | 0.0  | 0.0  | 0.0  |
| 140°   | 0.0  | 0.0  | 0.0  | 0.0  | 0.0  | 0.0  | 0.0  | 0.0  | 0.0  | 0.0  | 0.0  |
| 142.5° | 0.0  | 0.0  | 0.0  | 0.0  | 0.0  | 0.0  | 0.0  | 0.0  | 0.0  | 0.0  | 0.0  |
| 145°   | 0.0  | 0.0  | 0.0  | 0.0  | 0.0  | 0.0  | 0.0  | 0.0  | 0.0  | 0.0  | 0.0  |
| 147.5° | 0.0  | 0.0  | 0.0  | 0.0  | 0.0  | 0.0  | 0.0  | 0.0  | 0.0  | 0.0  | 0.0  |
| 150°   | 0.0  | 0.0  | 0.0  | 0.0  | 0.0  | 0.0  | 0.0  | 0.0  | 0.0  | 0.0  | 0.0  |
| 152.5° | 0.0  | 0.0  | 0.0  | 0.0  | 0.0  | 0.0  | 0.0  | 0.0  | 0.0  | 0.0  | 0.0  |
| 155°   | 0.0  | 0.0  | 0.0  | 0.0  | 0.0  | 0.0  | 0.0  | 0.0  | 0.0  | 0.0  | 0.0  |
| 157.5° | 0.0  | 0.0  | 0.0  | 0.0  | 0.0  | 0.0  | 0.0  | 0.0  | 0.0  | 0.0  | 0.0  |
| 160°   | 0.0  | 0.0  | 0.0  | 0.0  | 0.0  | 0.0  | 0.0  | 0.0  | 0.0  | 0.0  | 0.0  |
| 162.5° | 0.0  | 0.0  | 0.0  | 0.0  | 0.0  | 0.0  | 0.0  | 0.0  | 0.0  | 0.0  | 0.0  |
| 165°   | 0.0  | 0.0  | 0.0  | 0.0  | 0.0  | 0.0  | 0.0  | 0.0  | 0.0  | 0.0  | 0.0  |
| 167.5° | 0.0  | 0.0  | 0.0  | 0.0  | 0.0  | 0.0  | 0.0  | 0.0  | 0.0  | 0.0  | 0.0  |
| 170°   | 0.0  | 0.0  | 0.0  | 0.0  | 0.0  | 0.0  | 0.0  | 0.0  | 0.0  | 0.0  | 0.0  |
| 172.5° | 0.0  | 0.0  | 0.0  | 0.0  | 0.0  | 0.0  | 0.0  | 0.0  | 0.0  | 0.0  | 0.0  |
| 175°   | 0.0  | 0.0  | 0.0  | 0.0  | 0.0  | 0.0  | 0.0  | 0.0  | 0.0  | 0.0  | 0.0  |
| 177.5° | 0.0  | 0.0  | 0.0  | 0.0  | 0.0  | 0.0  | 0.0  | 0.0  | 0.0  | 0.0  | 0.0  |
| 180°   | 0.0  | 0.0  | 0.0  | 0.0  | 0.0  | 0.0  | 0.0  | 0.0  | 0.0  | 0.0  | 0.0  |



REPORT NUMBER: P362273  
 CATALOG NUMBER: NVN-SA1C-722-U-SLL

**CANDELA DISTRIBUTION (continued):**

|        | 220°   | 225°   | 230°   | 235°   | 240°   | 245°   | 250°   | 255°   | 260°   | 265°   | 270°   |
|--------|--------|--------|--------|--------|--------|--------|--------|--------|--------|--------|--------|
| 0°     | 1436.1 | 1436.1 | 1436.1 | 1436.1 | 1436.1 | 1436.1 | 1436.1 | 1436.1 | 1436.1 | 1436.1 | 1436.1 |
| 2.5°   | 1207.3 | 1198.9 | 1207.5 | 1216.0 | 1219.6 | 1223.2 | 1213.9 | 1204.5 | 1219.2 | 1233.7 | 1237.5 |
| 5°     | 989.1  | 981.4  | 987.2  | 992.9  | 980.2  | 967.6  | 966.3  | 964.8  | 975.7  | 986.6  | 988.3  |
| 7.5°   | 766.7  | 764.2  | 769.7  | 775.2  | 759.2  | 742.9  | 735.0  | 727.1  | 729.8  | 732.4  | 732.0  |
| 10°    | 571.6  | 573.1  | 579.9  | 586.5  | 574.1  | 561.6  | 556.2  | 550.7  | 556.7  | 562.6  | 568.0  |
| 12.5°  | 428.2  | 431.4  | 438.6  | 445.5  | 440.5  | 435.2  | 435.7  | 436.3  | 443.3  | 450.1  | 456.1  |
| 15°    | 332.6  | 336.4  | 341.5  | 346.4  | 346.6  | 346.6  | 351.5  | 356.2  | 355.6  | 355.1  | 359.2  |
| 17.5°  | 275.4  | 280.3  | 280.8  | 281.4  | 281.6  | 281.8  | 281.4  | 281.0  | 278.2  | 275.4  | 278.6  |
| 20°    | 235.8  | 237.5  | 239.0  | 240.3  | 238.6  | 236.7  | 232.0  | 227.3  | 225.4  | 223.5  | 226.5  |
| 22.5°  | 214.5  | 217.5  | 216.0  | 214.3  | 210.9  | 207.3  | 203.7  | 200.0  | 199.8  | 199.4  | 201.1  |
| 25°    | 196.6  | 199.0  | 196.4  | 193.7  | 191.3  | 188.8  | 186.4  | 183.9  | 183.8  | 183.6  | 184.3  |
| 27.5°  | 181.7  | 183.9  | 181.5  | 179.0  | 177.0  | 174.9  | 173.0  | 171.1  | 170.8  | 170.4  | 170.6  |
| 30°    | 168.9  | 170.9  | 168.9  | 166.6  | 165.1  | 163.4  | 162.1  | 160.8  | 160.6  | 160.4  | 160.4  |
| 32.5°  | 157.4  | 159.4  | 157.9  | 156.4  | 155.1  | 153.8  | 152.8  | 151.9  | 151.0  | 150.0  | 147.9  |
| 35°    | 147.4  | 149.5  | 148.5  | 147.4  | 145.9  | 144.4  | 142.7  | 140.8  | 138.3  | 135.7  | 134.6  |
| 37.5°  | 138.9  | 141.0  | 140.0  | 139.1  | 137.0  | 134.9  | 131.9  | 128.7  | 128.0  | 127.0  | 126.8  |
| 40°    | 132.1  | 135.3  | 133.4  | 131.4  | 128.2  | 125.0  | 123.4  | 121.9  | 121.6  | 121.2  | 120.8  |
| 42.5°  | 124.6  | 129.5  | 126.1  | 122.7  | 119.7  | 116.7  | 116.3  | 115.9  | 115.7  | 115.5  | 115.5  |
| 45°    | 115.2  | 120.4  | 117.0  | 113.5  | 111.8  | 110.1  | 110.1  | 110.1  | 110.3  | 110.3  | 110.6  |
| 47.5°  | 106.3  | 109.5  | 107.8  | 106.1  | 105.2  | 104.2  | 104.4  | 104.6  | 105.2  | 105.5  | 106.5  |
| 50°    | 98.8   | 99.9   | 100.3  | 100.5  | 99.9   | 99.3   | 99.7   | 99.9   | 100.5  | 100.8  | 101.6  |
| 52.5°  | 93.3   | 95.0   | 95.0   | 94.8   | 94.8   | 94.8   | 95.2   | 95.6   | 96.1   | 96.7   | 97.4   |
| 55°    | 89.7   | 92.2   | 91.4   | 90.7   | 90.8   | 90.8   | 91.2   | 91.6   | 92.2   | 92.5   | 93.7   |
| 57.5°  | 86.3   | 89.0   | 88.2   | 87.5   | 87.5   | 87.5   | 87.6   | 87.8   | 88.4   | 88.8   | 89.5   |
| 60°    | 82.4   | 85.0   | 84.2   | 83.3   | 83.5   | 83.7   | 83.9   | 83.9   | 84.2   | 84.4   | 84.4   |
| 62.5°  | 77.6   | 80.3   | 79.5   | 78.6   | 79.2   | 79.5   | 79.5   | 79.5   | 79.9   | 80.1   | 79.5   |
| 65°    | 72.7   | 75.2   | 74.4   | 73.7   | 74.4   | 75.0   | 75.4   | 75.6   | 75.4   | 75.2   | 74.6   |
| 67.5°  | 67.5   | 69.9   | 69.2   | 68.2   | 69.2   | 69.9   | 70.7   | 71.2   | 70.7   | 70.1   | 69.4   |
| 70°    | 61.8   | 64.3   | 63.3   | 62.4   | 63.3   | 64.3   | 65.0   | 65.8   | 65.0   | 64.3   | 64.1   |
| 72.5°  | 55.8   | 58.6   | 57.5   | 56.4   | 57.5   | 58.6   | 59.0   | 59.4   | 58.8   | 58.2   | 57.9   |
| 75°    | 49.2   | 52.0   | 51.1   | 49.9   | 50.9   | 51.8   | 52.0   | 52.2   | 52.2   | 52.0   | 50.9   |
| 77.5°  | 42.2   | 44.5   | 43.9   | 43.3   | 43.9   | 44.5   | 44.5   | 44.5   | 44.7   | 44.7   | 43.2   |
| 80°    | 33.9   | 35.2   | 35.4   | 35.6   | 35.8   | 36.0   | 35.8   | 35.6   | 35.2   | 34.9   | 33.9   |
| 82.5°  | 25.3   | 25.3   | 26.8   | 28.1   | 28.1   | 27.9   | 27.7   | 27.3   | 26.6   | 25.6   | 23.6   |
| 85°    | 16.0   | 15.1   | 17.5   | 19.8   | 19.8   | 19.6   | 19.2   | 18.7   | 17.2   | 15.5   | 13.8   |
| 87.5°  | 5.5    | 4.5    | 7.0    | 9.4    | 9.6    | 9.6    | 9.2    | 8.9    | 7.4    | 5.7    | 4.3    |
| 90°    | 0.0    | 0.0    | 0.0    | 0.0    | 0.0    | 0.0    | 0.0    | 0.0    | 0.0    | 0.0    | 0.0    |
| 92.5°  | 0.0    | 0.0    | 0.0    | 0.0    | 0.0    | 0.0    | 0.0    | 0.0    | 0.0    | 0.0    | 0.0    |
| 95°    | 0.0    | 0.0    | 0.0    | 0.0    | 0.0    | 0.0    | 0.0    | 0.0    | 0.0    | 0.0    | 0.0    |
| 97.5°  | 0.0    | 0.0    | 0.0    | 0.0    | 0.0    | 0.0    | 0.0    | 0.0    | 0.0    | 0.0    | 0.0    |
| 100°   | 0.0    | 0.0    | 0.0    | 0.0    | 0.0    | 0.0    | 0.0    | 0.0    | 0.0    | 0.0    | 0.0    |
| 102.5° | 0.0    | 0.0    | 0.0    | 0.0    | 0.0    | 0.0    | 0.0    | 0.0    | 0.0    | 0.0    | 0.0    |
| 105°   | 0.0    | 0.0    | 0.0    | 0.0    | 0.0    | 0.0    | 0.0    | 0.0    | 0.0    | 0.0    | 0.0    |
| 107.5° | 0.0    | 0.0    | 0.0    | 0.0    | 0.0    | 0.0    | 0.0    | 0.0    | 0.0    | 0.0    | 0.0    |
| 110°   | 0.0    | 0.0    | 0.0    | 0.0    | 0.0    | 0.0    | 0.0    | 0.0    | 0.0    | 0.0    | 0.0    |



REPORT NUMBER: P362273  
 CATALOG NUMBER: NVN-SA1C-722-U-SLL

**CANDELA DISTRIBUTION (continued):**

|        | 220° | 225° | 230° | 235° | 240° | 245° | 250° | 255° | 260° | 265° | 270° |
|--------|------|------|------|------|------|------|------|------|------|------|------|
| 112.5° | 0.0  | 0.0  | 0.0  | 0.0  | 0.0  | 0.0  | 0.0  | 0.0  | 0.0  | 0.0  | 0.0  |
| 115°   | 0.0  | 0.0  | 0.0  | 0.0  | 0.0  | 0.0  | 0.0  | 0.0  | 0.0  | 0.0  | 0.0  |
| 117.5° | 0.0  | 0.0  | 0.0  | 0.0  | 0.0  | 0.0  | 0.0  | 0.0  | 0.0  | 0.0  | 0.0  |
| 120°   | 0.0  | 0.0  | 0.0  | 0.0  | 0.0  | 0.0  | 0.0  | 0.0  | 0.0  | 0.0  | 0.0  |
| 122.5° | 0.0  | 0.0  | 0.0  | 0.0  | 0.0  | 0.0  | 0.0  | 0.0  | 0.0  | 0.0  | 0.0  |
| 125°   | 0.0  | 0.0  | 0.0  | 0.0  | 0.0  | 0.0  | 0.0  | 0.0  | 0.0  | 0.0  | 0.0  |
| 127.5° | 0.0  | 0.0  | 0.0  | 0.0  | 0.0  | 0.0  | 0.0  | 0.0  | 0.0  | 0.0  | 0.0  |
| 130°   | 0.0  | 0.0  | 0.0  | 0.0  | 0.0  | 0.0  | 0.0  | 0.0  | 0.0  | 0.0  | 0.0  |
| 132.5° | 0.0  | 0.0  | 0.0  | 0.0  | 0.0  | 0.0  | 0.0  | 0.0  | 0.0  | 0.0  | 0.0  |
| 135°   | 0.0  | 0.0  | 0.0  | 0.0  | 0.0  | 0.0  | 0.0  | 0.0  | 0.0  | 0.0  | 0.0  |
| 137.5° | 0.0  | 0.0  | 0.0  | 0.0  | 0.0  | 0.0  | 0.0  | 0.0  | 0.0  | 0.0  | 0.0  |
| 140°   | 0.0  | 0.0  | 0.0  | 0.0  | 0.0  | 0.0  | 0.0  | 0.0  | 0.0  | 0.0  | 0.0  |
| 142.5° | 0.0  | 0.0  | 0.0  | 0.0  | 0.0  | 0.0  | 0.0  | 0.0  | 0.0  | 0.0  | 0.0  |
| 145°   | 0.0  | 0.0  | 0.0  | 0.0  | 0.0  | 0.0  | 0.0  | 0.0  | 0.0  | 0.0  | 0.0  |
| 147.5° | 0.0  | 0.0  | 0.0  | 0.0  | 0.0  | 0.0  | 0.0  | 0.0  | 0.0  | 0.0  | 0.0  |
| 150°   | 0.0  | 0.0  | 0.0  | 0.0  | 0.0  | 0.0  | 0.0  | 0.0  | 0.0  | 0.0  | 0.0  |
| 152.5° | 0.0  | 0.0  | 0.0  | 0.0  | 0.0  | 0.0  | 0.0  | 0.0  | 0.0  | 0.0  | 0.0  |
| 155°   | 0.0  | 0.0  | 0.0  | 0.0  | 0.0  | 0.0  | 0.0  | 0.0  | 0.0  | 0.0  | 0.0  |
| 157.5° | 0.0  | 0.0  | 0.0  | 0.0  | 0.0  | 0.0  | 0.0  | 0.0  | 0.0  | 0.0  | 0.0  |
| 160°   | 0.0  | 0.0  | 0.0  | 0.0  | 0.0  | 0.0  | 0.0  | 0.0  | 0.0  | 0.0  | 0.0  |
| 162.5° | 0.0  | 0.0  | 0.0  | 0.0  | 0.0  | 0.0  | 0.0  | 0.0  | 0.0  | 0.0  | 0.0  |
| 165°   | 0.0  | 0.0  | 0.0  | 0.0  | 0.0  | 0.0  | 0.0  | 0.0  | 0.0  | 0.0  | 0.0  |
| 167.5° | 0.0  | 0.0  | 0.0  | 0.0  | 0.0  | 0.0  | 0.0  | 0.0  | 0.0  | 0.0  | 0.0  |
| 170°   | 0.0  | 0.0  | 0.0  | 0.0  | 0.0  | 0.0  | 0.0  | 0.0  | 0.0  | 0.0  | 0.0  |
| 172.5° | 0.0  | 0.0  | 0.0  | 0.0  | 0.0  | 0.0  | 0.0  | 0.0  | 0.0  | 0.0  | 0.0  |
| 175°   | 0.0  | 0.0  | 0.0  | 0.0  | 0.0  | 0.0  | 0.0  | 0.0  | 0.0  | 0.0  | 0.0  |
| 177.5° | 0.0  | 0.0  | 0.0  | 0.0  | 0.0  | 0.0  | 0.0  | 0.0  | 0.0  | 0.0  | 0.0  |
| 180°   | 0.0  | 0.0  | 0.0  | 0.0  | 0.0  | 0.0  | 0.0  | 0.0  | 0.0  | 0.0  | 0.0  |





REPORT NUMBER: P362273  
 CATALOG NUMBER: NVN-SA1C-722-U-SLL

**CANDELA DISTRIBUTION (continued):**

|        | 275°   | 280°   | 285°   | 290°   | 295°   | 300°   | 305°   | 310°   | 315°   | 320°   | 325°   |
|--------|--------|--------|--------|--------|--------|--------|--------|--------|--------|--------|--------|
| 0°     | 1436.1 | 1436.1 | 1436.1 | 1436.1 | 1436.1 | 1436.1 | 1436.1 | 1436.1 | 1436.1 | 1436.1 | 1436.1 |
| 2.5°   | 1243.1 | 1245.6 | 1247.9 | 1266.3 | 1284.6 | 1306.1 | 1327.6 | 1344.0 | 1360.2 | 1377.0 | 1393.7 |
| 5°     | 994.2  | 997.2  | 1000.2 | 1022.6 | 1044.9 | 1074.8 | 1104.8 | 1130.6 | 1156.5 | 1186.8 | 1217.1 |
| 7.5°   | 736.9  | 743.5  | 749.9  | 773.9  | 797.6  | 829.8  | 861.9  | 895.6  | 929.2  | 968.7  | 1008.3 |
| 10°    | 578.8  | 591.2  | 603.5  | 628.0  | 652.5  | 684.3  | 716.0  | 751.2  | 786.5  | 825.5  | 864.3  |
| 12.5°  | 468.5  | 485.1  | 501.5  | 530.9  | 560.3  | 598.4  | 636.3  | 675.5  | 714.5  | 748.8  | 783.1  |
| 15°    | 370.2  | 388.2  | 406.2  | 437.3  | 468.3  | 510.2  | 551.8  | 594.6  | 637.2  | 678.3  | 719.4  |
| 17.5°  | 288.7  | 303.6  | 318.3  | 344.7  | 370.9  | 411.4  | 452.0  | 496.8  | 541.7  | 591.8  | 641.7  |
| 20°    | 232.9  | 239.2  | 245.4  | 264.4  | 283.3  | 316.3  | 349.0  | 394.8  | 440.6  | 500.6  | 560.5  |
| 22.5°  | 204.1  | 207.3  | 210.3  | 219.6  | 228.6  | 249.9  | 271.0  | 311.5  | 351.9  | 417.3  | 482.5  |
| 25°    | 186.8  | 189.2  | 191.7  | 197.7  | 203.7  | 213.9  | 224.1  | 252.5  | 281.0  | 345.3  | 409.4  |
| 27.5°  | 171.1  | 174.9  | 178.5  | 181.3  | 183.9  | 190.9  | 197.7  | 216.4  | 235.0  | 295.0  | 354.7  |
| 30°    | 159.8  | 161.1  | 162.5  | 166.8  | 170.9  | 178.1  | 185.3  | 198.3  | 211.3  | 262.0  | 312.5  |
| 32.5°  | 146.6  | 148.5  | 150.4  | 154.9  | 159.4  | 166.0  | 172.6  | 183.2  | 193.6  | 236.9  | 280.1  |
| 35°    | 134.8  | 136.6  | 138.5  | 143.0  | 147.4  | 154.5  | 161.5  | 170.4  | 179.0  | 216.7  | 254.4  |
| 37.5°  | 127.4  | 129.3  | 131.2  | 135.1  | 138.9  | 146.1  | 153.0  | 160.0  | 166.8  | 201.7  | 236.5  |
| 40°    | 121.2  | 123.1  | 125.0  | 128.7  | 132.3  | 139.3  | 146.1  | 151.9  | 157.7  | 190.4  | 223.0  |
| 42.5°  | 115.7  | 117.8  | 119.9  | 123.6  | 127.2  | 133.4  | 139.7  | 147.4  | 154.9  | 180.6  | 206.0  |
| 45°    | 111.2  | 113.3  | 115.2  | 119.3  | 123.4  | 129.5  | 135.5  | 146.3  | 157.0  | 175.5  | 193.9  |
| 47.5°  | 107.1  | 109.3  | 111.4  | 115.9  | 120.4  | 128.0  | 135.3  | 144.4  | 153.2  | 171.5  | 189.8  |
| 50°    | 103.1  | 105.7  | 108.4  | 113.8  | 119.1  | 131.7  | 144.2  | 145.5  | 146.6  | 168.3  | 189.8  |
| 52.5°  | 99.3   | 102.3  | 105.4  | 112.1  | 118.7  | 133.4  | 148.1  | 143.4  | 138.5  | 162.3  | 186.0  |
| 55°    | 95.6   | 98.2   | 100.6  | 108.9  | 117.2  | 128.0  | 138.7  | 132.5  | 126.1  | 151.0  | 175.8  |
| 57.5°  | 90.5   | 93.3   | 95.9   | 104.8  | 113.6  | 121.2  | 128.5  | 122.9  | 117.0  | 138.1  | 159.1  |
| 60°    | 85.2   | 88.4   | 91.6   | 102.9  | 114.0  | 112.7  | 111.2  | 110.1  | 108.7  | 123.8  | 138.9  |
| 62.5°  | 80.5   | 83.9   | 87.3   | 102.0  | 116.7  | 107.6  | 98.6   | 99.5   | 100.3  | 111.4  | 122.5  |
| 65°    | 75.8   | 79.2   | 82.4   | 89.7   | 97.1   | 93.5   | 89.9   | 91.4   | 92.7   | 103.7  | 114.6  |
| 67.5°  | 70.5   | 73.5   | 76.3   | 78.8   | 81.2   | 81.6   | 82.0   | 83.5   | 85.0   | 98.0   | 110.8  |
| 70°    | 64.6   | 67.1   | 69.5   | 71.2   | 72.7   | 73.5   | 74.1   | 76.0   | 77.8   | 92.0   | 106.1  |
| 72.5°  | 58.0   | 60.1   | 62.0   | 63.5   | 65.0   | 65.6   | 66.0   | 67.8   | 69.7   | 84.8   | 99.9   |
| 75°    | 50.9   | 52.6   | 54.1   | 55.4   | 56.7   | 57.5   | 58.2   | 59.6   | 60.9   | 77.3   | 93.5   |
| 77.5°  | 43.0   | 44.7   | 46.2   | 47.3   | 48.2   | 49.0   | 49.6   | 51.3   | 53.0   | 66.7   | 80.3   |
| 80°    | 33.5   | 35.6   | 37.5   | 38.4   | 39.2   | 39.4   | 39.4   | 40.9   | 42.4   | 52.2   | 61.8   |
| 82.5°  | 23.7   | 26.0   | 28.1   | 28.8   | 29.6   | 29.6   | 29.6   | 31.3   | 33.0   | 39.6   | 46.0   |
| 85°    | 13.9   | 16.4   | 18.7   | 19.4   | 20.2   | 20.5   | 20.7   | 21.5   | 22.1   | 26.8   | 31.3   |
| 87.5°  | 4.3    | 6.4    | 8.3    | 8.7    | 9.0    | 9.8    | 10.6   | 10.7   | 10.7   | 13.9   | 17.2   |
| 90°    | 0.0    | 0.0    | 0.0    | 0.0    | 0.0    | 0.0    | 0.0    | 0.0    | 0.0    | 0.0    | 0.0    |
| 92.5°  | 0.0    | 0.0    | 0.0    | 0.0    | 0.0    | 0.0    | 0.0    | 0.0    | 0.0    | 0.0    | 0.0    |
| 95°    | 0.0    | 0.0    | 0.0    | 0.0    | 0.0    | 0.0    | 0.0    | 0.0    | 0.0    | 0.0    | 0.0    |
| 97.5°  | 0.0    | 0.0    | 0.0    | 0.0    | 0.0    | 0.0    | 0.0    | 0.0    | 0.0    | 0.0    | 0.0    |
| 100°   | 0.0    | 0.0    | 0.0    | 0.0    | 0.0    | 0.0    | 0.0    | 0.0    | 0.0    | 0.0    | 0.0    |
| 102.5° | 0.0    | 0.0    | 0.0    | 0.0    | 0.0    | 0.0    | 0.0    | 0.0    | 0.0    | 0.0    | 0.0    |
| 105°   | 0.0    | 0.0    | 0.0    | 0.0    | 0.0    | 0.0    | 0.0    | 0.0    | 0.0    | 0.0    | 0.0    |
| 107.5° | 0.0    | 0.0    | 0.0    | 0.0    | 0.0    | 0.0    | 0.0    | 0.0    | 0.0    | 0.0    | 0.0    |
| 110°   | 0.0    | 0.0    | 0.0    | 0.0    | 0.0    | 0.0    | 0.0    | 0.0    | 0.0    | 0.0    | 0.0    |



REPORT NUMBER: P362273  
 CATALOG NUMBER: NVN-SA1C-722-U-SLL

**CANDELA DISTRIBUTION (continued):**

|        | 275° | 280° | 285° | 290° | 295° | 300° | 305° | 310° | 315° | 320° | 325° |
|--------|------|------|------|------|------|------|------|------|------|------|------|
| 112.5° | 0.0  | 0.0  | 0.0  | 0.0  | 0.0  | 0.0  | 0.0  | 0.0  | 0.0  | 0.0  | 0.0  |
| 115°   | 0.0  | 0.0  | 0.0  | 0.0  | 0.0  | 0.0  | 0.0  | 0.0  | 0.0  | 0.0  | 0.0  |
| 117.5° | 0.0  | 0.0  | 0.0  | 0.0  | 0.0  | 0.0  | 0.0  | 0.0  | 0.0  | 0.0  | 0.0  |
| 120°   | 0.0  | 0.0  | 0.0  | 0.0  | 0.0  | 0.0  | 0.0  | 0.0  | 0.0  | 0.0  | 0.0  |
| 122.5° | 0.0  | 0.0  | 0.0  | 0.0  | 0.0  | 0.0  | 0.0  | 0.0  | 0.0  | 0.0  | 0.0  |
| 125°   | 0.0  | 0.0  | 0.0  | 0.0  | 0.0  | 0.0  | 0.0  | 0.0  | 0.0  | 0.0  | 0.0  |
| 127.5° | 0.0  | 0.0  | 0.0  | 0.0  | 0.0  | 0.0  | 0.0  | 0.0  | 0.0  | 0.0  | 0.0  |
| 130°   | 0.0  | 0.0  | 0.0  | 0.0  | 0.0  | 0.0  | 0.0  | 0.0  | 0.0  | 0.0  | 0.0  |
| 132.5° | 0.0  | 0.0  | 0.0  | 0.0  | 0.0  | 0.0  | 0.0  | 0.0  | 0.0  | 0.0  | 0.0  |
| 135°   | 0.0  | 0.0  | 0.0  | 0.0  | 0.0  | 0.0  | 0.0  | 0.0  | 0.0  | 0.0  | 0.0  |
| 137.5° | 0.0  | 0.0  | 0.0  | 0.0  | 0.0  | 0.0  | 0.0  | 0.0  | 0.0  | 0.0  | 0.0  |
| 140°   | 0.0  | 0.0  | 0.0  | 0.0  | 0.0  | 0.0  | 0.0  | 0.0  | 0.0  | 0.0  | 0.0  |
| 142.5° | 0.0  | 0.0  | 0.0  | 0.0  | 0.0  | 0.0  | 0.0  | 0.0  | 0.0  | 0.0  | 0.0  |
| 145°   | 0.0  | 0.0  | 0.0  | 0.0  | 0.0  | 0.0  | 0.0  | 0.0  | 0.0  | 0.0  | 0.0  |
| 147.5° | 0.0  | 0.0  | 0.0  | 0.0  | 0.0  | 0.0  | 0.0  | 0.0  | 0.0  | 0.0  | 0.0  |
| 150°   | 0.0  | 0.0  | 0.0  | 0.0  | 0.0  | 0.0  | 0.0  | 0.0  | 0.0  | 0.0  | 0.0  |
| 152.5° | 0.0  | 0.0  | 0.0  | 0.0  | 0.0  | 0.0  | 0.0  | 0.0  | 0.0  | 0.0  | 0.0  |
| 155°   | 0.0  | 0.0  | 0.0  | 0.0  | 0.0  | 0.0  | 0.0  | 0.0  | 0.0  | 0.0  | 0.0  |
| 157.5° | 0.0  | 0.0  | 0.0  | 0.0  | 0.0  | 0.0  | 0.0  | 0.0  | 0.0  | 0.0  | 0.0  |
| 160°   | 0.0  | 0.0  | 0.0  | 0.0  | 0.0  | 0.0  | 0.0  | 0.0  | 0.0  | 0.0  | 0.0  |
| 162.5° | 0.0  | 0.0  | 0.0  | 0.0  | 0.0  | 0.0  | 0.0  | 0.0  | 0.0  | 0.0  | 0.0  |
| 165°   | 0.0  | 0.0  | 0.0  | 0.0  | 0.0  | 0.0  | 0.0  | 0.0  | 0.0  | 0.0  | 0.0  |
| 167.5° | 0.0  | 0.0  | 0.0  | 0.0  | 0.0  | 0.0  | 0.0  | 0.0  | 0.0  | 0.0  | 0.0  |
| 170°   | 0.0  | 0.0  | 0.0  | 0.0  | 0.0  | 0.0  | 0.0  | 0.0  | 0.0  | 0.0  | 0.0  |
| 172.5° | 0.0  | 0.0  | 0.0  | 0.0  | 0.0  | 0.0  | 0.0  | 0.0  | 0.0  | 0.0  | 0.0  |
| 175°   | 0.0  | 0.0  | 0.0  | 0.0  | 0.0  | 0.0  | 0.0  | 0.0  | 0.0  | 0.0  | 0.0  |
| 177.5° | 0.0  | 0.0  | 0.0  | 0.0  | 0.0  | 0.0  | 0.0  | 0.0  | 0.0  | 0.0  | 0.0  |
| 180°   | 0.0  | 0.0  | 0.0  | 0.0  | 0.0  | 0.0  | 0.0  | 0.0  | 0.0  | 0.0  | 0.0  |



REPORT NUMBER: P362273  
 CATALOG NUMBER: NVN-SA1C-722-U-SLL

**CANDELA DISTRIBUTION (continued):**

|        | 330°   | 335°   | 340°   | 345°   | 350°   | 355°   | 360°   |
|--------|--------|--------|--------|--------|--------|--------|--------|
| 0°     | 1436.1 | 1436.1 | 1436.1 | 1436.1 | 1436.1 | 1436.1 | 1436.1 |
| 2.5°   | 1413.0 | 1432.2 | 1454.6 | 1476.9 | 1495.9 | 1514.9 | 1530.8 |
| 5°     | 1255.8 | 1294.4 | 1341.7 | 1388.8 | 1430.9 | 1472.9 | 1521.7 |
| 7.5°   | 1058.3 | 1108.2 | 1169.5 | 1230.7 | 1290.1 | 1349.3 | 1424.3 |
| 10°    | 915.2  | 965.9  | 1030.7 | 1095.4 | 1162.1 | 1228.6 | 1313.4 |
| 12.5°  | 824.4  | 865.5  | 928.2  | 991.0  | 1069.4 | 1147.6 | 1229.2 |
| 15°    | 764.4  | 809.3  | 870.4  | 931.4  | 1017.2 | 1102.9 | 1196.8 |
| 17.5°  | 700.5  | 759.2  | 837.4  | 915.6  | 1017.2 | 1118.6 | 1229.2 |
| 20°    | 633.6  | 706.6  | 808.0  | 909.4  | 1046.2 | 1182.8 | 1324.0 |
| 22.5°  | 566.9  | 651.4  | 781.4  | 911.3  | 1090.1 | 1268.8 | 1459.3 |
| 25°    | 506.8  | 604.2  | 765.2  | 926.0  | 1154.0 | 1381.9 | 1618.2 |
| 27.5°  | 461.2  | 567.5  | 758.6  | 949.5  | 1235.0 | 1520.6 | 1791.0 |
| 30°    | 420.7  | 528.8  | 750.7  | 972.5  | 1313.1 | 1653.4 | 1926.2 |
| 32.5°  | 385.6  | 491.2  | 735.4  | 979.5  | 1367.5 | 1755.6 | 2040.6 |
| 35°    | 358.1  | 461.8  | 709.8  | 957.8  | 1401.7 | 1845.5 | 2159.7 |
| 37.5°  | 334.3  | 432.2  | 680.6  | 929.0  | 1432.0 | 1935.0 | 2293.7 |
| 40°    | 311.7  | 400.5  | 655.5  | 910.3  | 1473.8 | 2037.4 | 2435.2 |
| 42.5°  | 290.2  | 374.5  | 635.3  | 896.2  | 1512.7 | 2129.0 | 2559.0 |
| 45°    | 274.2  | 354.5  | 617.4  | 880.2  | 1537.7 | 2195.3 | 2652.3 |
| 47.5°  | 266.3  | 342.6  | 607.8  | 872.8  | 1562.8 | 2252.6 | 2729.8 |
| 50°    | 265.2  | 340.6  | 618.7  | 896.9  | 1617.1 | 2337.0 | 2818.4 |
| 52.5°  | 265.0  | 344.0  | 650.2  | 956.5  | 1717.9 | 2479.1 | 2914.3 |
| 55°    | 261.0  | 346.0  | 687.7  | 1029.2 | 1853.2 | 2677.0 | 3086.8 |
| 57.5°  | 249.0  | 338.9  | 726.4  | 1113.7 | 1996.3 | 2878.7 | 3281.1 |
| 60°    | 230.3  | 321.5  | 758.2  | 1194.7 | 2092.4 | 2989.9 | 3355.9 |
| 62.5°  | 206.9  | 291.2  | 768.8  | 1246.2 | 2089.8 | 2933.3 | 3280.5 |
| 65°    | 187.0  | 259.3  | 734.1  | 1208.7 | 1984.0 | 2759.2 | 3131.4 |
| 67.5°  | 169.2  | 227.5  | 647.4  | 1067.1 | 1793.9 | 2520.4 | 2941.8 |
| 70°    | 156.4  | 206.6  | 535.6  | 864.7  | 1555.8 | 2246.8 | 2722.3 |
| 72.5°  | 148.3  | 196.6  | 436.7  | 676.6  | 1262.6 | 1848.3 | 2328.5 |
| 75°    | 137.2  | 180.9  | 342.6  | 504.2  | 966.3  | 1428.4 | 1758.8 |
| 77.5°  | 116.5  | 152.5  | 258.2  | 363.9  | 709.0  | 1053.9 | 1223.2 |
| 80°    | 89.9   | 117.8  | 177.5  | 237.3  | 487.9  | 738.6  | 834.0  |
| 82.5°  | 64.1   | 82.2   | 107.6  | 133.1  | 324.2  | 515.1  | 523.0  |
| 85°    | 39.6   | 47.9   | 61.6   | 75.4   | 214.5  | 353.6  | 294.6  |
| 87.5°  | 21.3   | 25.4   | 32.6   | 39.6   | 68.6   | 97.6   | 56.2   |
| 90°    | 0.0    | 0.0    | 0.0    | 0.0    | 0.0    | 0.0    | 0.0    |
| 92.5°  | 0.0    | 0.0    | 0.0    | 0.0    | 0.0    | 0.0    | 0.0    |
| 95°    | 0.0    | 0.0    | 0.0    | 0.0    | 0.0    | 0.0    | 0.0    |
| 97.5°  | 0.0    | 0.0    | 0.0    | 0.0    | 0.0    | 0.0    | 0.0    |
| 100°   | 0.0    | 0.0    | 0.0    | 0.0    | 0.0    | 0.0    | 0.0    |
| 102.5° | 0.0    | 0.0    | 0.0    | 0.0    | 0.0    | 0.0    | 0.0    |
| 105°   | 0.0    | 0.0    | 0.0    | 0.0    | 0.0    | 0.0    | 0.0    |
| 107.5° | 0.0    | 0.0    | 0.0    | 0.0    | 0.0    | 0.0    | 0.0    |
| 110°   | 0.0    | 0.0    | 0.0    | 0.0    | 0.0    | 0.0    | 0.0    |



REPORT NUMBER: P362273  
 CATALOG NUMBER: NVN-SA1C-722-U-SLL

**CANDELA DISTRIBUTION (continued):**

|        | 330° | 335° | 340° | 345° | 350° | 355° | 360° |
|--------|------|------|------|------|------|------|------|
| 112.5° | 0.0  | 0.0  | 0.0  | 0.0  | 0.0  | 0.0  | 0.0  |
| 115°   | 0.0  | 0.0  | 0.0  | 0.0  | 0.0  | 0.0  | 0.0  |
| 117.5° | 0.0  | 0.0  | 0.0  | 0.0  | 0.0  | 0.0  | 0.0  |
| 120°   | 0.0  | 0.0  | 0.0  | 0.0  | 0.0  | 0.0  | 0.0  |
| 122.5° | 0.0  | 0.0  | 0.0  | 0.0  | 0.0  | 0.0  | 0.0  |
| 125°   | 0.0  | 0.0  | 0.0  | 0.0  | 0.0  | 0.0  | 0.0  |
| 127.5° | 0.0  | 0.0  | 0.0  | 0.0  | 0.0  | 0.0  | 0.0  |
| 130°   | 0.0  | 0.0  | 0.0  | 0.0  | 0.0  | 0.0  | 0.0  |
| 132.5° | 0.0  | 0.0  | 0.0  | 0.0  | 0.0  | 0.0  | 0.0  |
| 135°   | 0.0  | 0.0  | 0.0  | 0.0  | 0.0  | 0.0  | 0.0  |
| 137.5° | 0.0  | 0.0  | 0.0  | 0.0  | 0.0  | 0.0  | 0.0  |
| 140°   | 0.0  | 0.0  | 0.0  | 0.0  | 0.0  | 0.0  | 0.0  |
| 142.5° | 0.0  | 0.0  | 0.0  | 0.0  | 0.0  | 0.0  | 0.0  |
| 145°   | 0.0  | 0.0  | 0.0  | 0.0  | 0.0  | 0.0  | 0.0  |
| 147.5° | 0.0  | 0.0  | 0.0  | 0.0  | 0.0  | 0.0  | 0.0  |
| 150°   | 0.0  | 0.0  | 0.0  | 0.0  | 0.0  | 0.0  | 0.0  |
| 152.5° | 0.0  | 0.0  | 0.0  | 0.0  | 0.0  | 0.0  | 0.0  |
| 155°   | 0.0  | 0.0  | 0.0  | 0.0  | 0.0  | 0.0  | 0.0  |
| 157.5° | 0.0  | 0.0  | 0.0  | 0.0  | 0.0  | 0.0  | 0.0  |
| 160°   | 0.0  | 0.0  | 0.0  | 0.0  | 0.0  | 0.0  | 0.0  |
| 162.5° | 0.0  | 0.0  | 0.0  | 0.0  | 0.0  | 0.0  | 0.0  |
| 165°   | 0.0  | 0.0  | 0.0  | 0.0  | 0.0  | 0.0  | 0.0  |
| 167.5° | 0.0  | 0.0  | 0.0  | 0.0  | 0.0  | 0.0  | 0.0  |
| 170°   | 0.0  | 0.0  | 0.0  | 0.0  | 0.0  | 0.0  | 0.0  |
| 172.5° | 0.0  | 0.0  | 0.0  | 0.0  | 0.0  | 0.0  | 0.0  |
| 175°   | 0.0  | 0.0  | 0.0  | 0.0  | 0.0  | 0.0  | 0.0  |
| 177.5° | 0.0  | 0.0  | 0.0  | 0.0  | 0.0  | 0.0  | 0.0  |
| 180°   | 0.0  | 0.0  | 0.0  | 0.0  | 0.0  | 0.0  | 0.0  |

Signify Classified - Internal  
Cooper Lighting Solutions Photometric Lab  
1121 Highway 74 South  
Peachtree City, GA 30269



LM-79-2008: Approved Method: Electrical and Photometric Measurements of Solid-State Lighting Products

Report Prepared for

Cooper Lighting Solutions

McGRAW-EDISON

Report Number: SP1-1908-441-10-R4

Test Date: 10/25/2019

Luminaire Tested: SA1C-722-U-5WQ

Data in this report applies to families of products SA1C-722-U-5WQ.

**Test Information**

Test Method: LM-79-2008 Report  
 Number: SP1-1908-441-10-R4  
 Test Lab: COOPER LIGHTING SOLUTIONS  
 Photometer: SP1 - 76IN SPHERE  
 Measurement Geometry: 4π  
 Issue Date: 10/28/2024  
 Manufacturer: COOPER LIGHTING SOLUTIONS  
 Product Line: McGRAW-EDISON  
 Catalog Number: **SA1C-722-U-5WQ**  
 Description: McGRAW EDISON ROADWAY AND AREA LUMINAIRE

\*\*\*THIS IS A REVISION OF SP1-1908-441-4-R3. TO UPDATE THE CATALOG INFORMATION.\*\*\*TESTED IN SITU. ROADWAY AND AREA LUMINAIRE. (1) 70 CRI, 5000K, 1050MA LIGHTSQUARE WITH 16 LEDS AND TYPE V WIDE OPTICS.

**Spectral Parameters**

CCT (K): 2237  
 CIE u': 0.2876  
 CIE v': 0.5346  
 Duv: -0.0006  
 CIE x: 0.5005  
 CIE y: 0.4134  
 CIE z: 0.0860  
 Peak Wavelength (nm): 603  
 Dominant Wavelength (nm): 587  
 Purity: 74.5

|           |      |      |       |
|-----------|------|------|-------|
| CRI (Ra): | 72.0 |      |       |
| R1:       | 68.9 | R9:  | -17.4 |
| R2:       | 83.0 | R10: | 61.3  |
| R3:       | 95.2 | R11: | 59.8  |
| R4:       | 66.2 | R12: | 50.5  |
| R5:       | 65.9 | R13: | 71.1  |
| R6:       | 76.3 | R14: | 96.9  |
| R7:       | 76.7 |      |       |
| R8:       | 43.8 |      |       |

Rf: 69.8  
 Rg: 99.2



**Test Conditions**

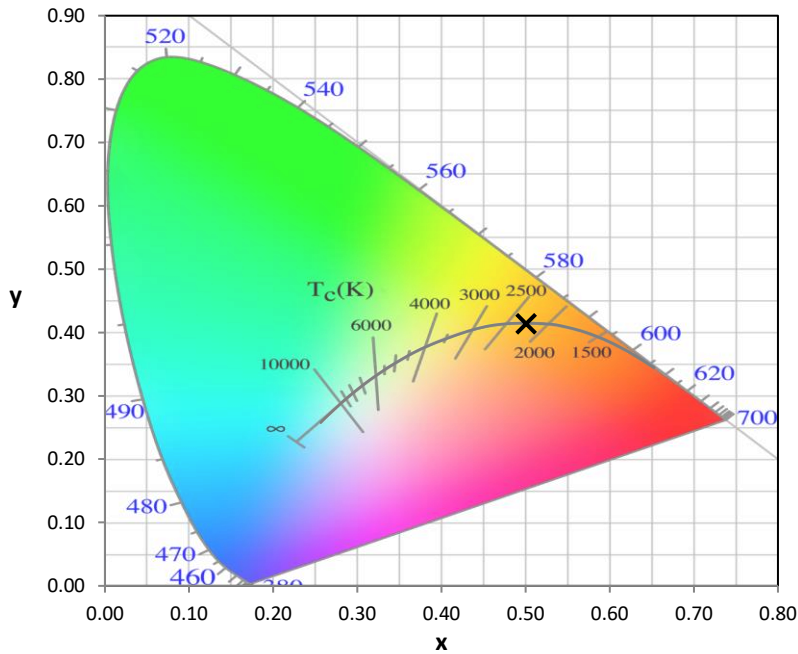
Stabilization Time: 71M  
 Operation Time: 12H  
 Room Temperature (°C) / RH%: 24.7/41%  
 Sphere Temperature (°C): 25.6

REPORT NUMBER: SP1-1908-441-10-R4

| Measurement and Test Equipment |                       |                  |                      |
|--------------------------------|-----------------------|------------------|----------------------|
| Instrument                     | Identification Number | Calibration Date | Calibration Due Date |
| Photometer                     | IN0058                | 6/28/2019        | 12/28/2019           |
| Power Meter                    | IN0071                | 12/5/2018        | 12/5/2019            |
| AC Power Source                | IN0063                | 12/5/2018        | 12/5/2019            |
| DC Power Source                | IN0208                | 12/5/2018        | 12/5/2019            |
| Sphere Thermometer             | IN0085                | 12/5/2018        | 12/5/2019            |
| Room Thermometer               | IN0046                | 12/5/2018        | 12/5/2019            |

REPORT NUMBER: SP1-1908-441-10-R4

CIE 1931 Chromaticity Diagram



CIE 1931 Chromaticity Diagram with 2017 ANSI 7-Step and 4-Step Quadrangles



Point lies inside the ANSI 2200K 4-step quadrangle



REPORT NUMBER: SP1-1908-441-10-R4

**Photopic Flux vs. Wavelength**

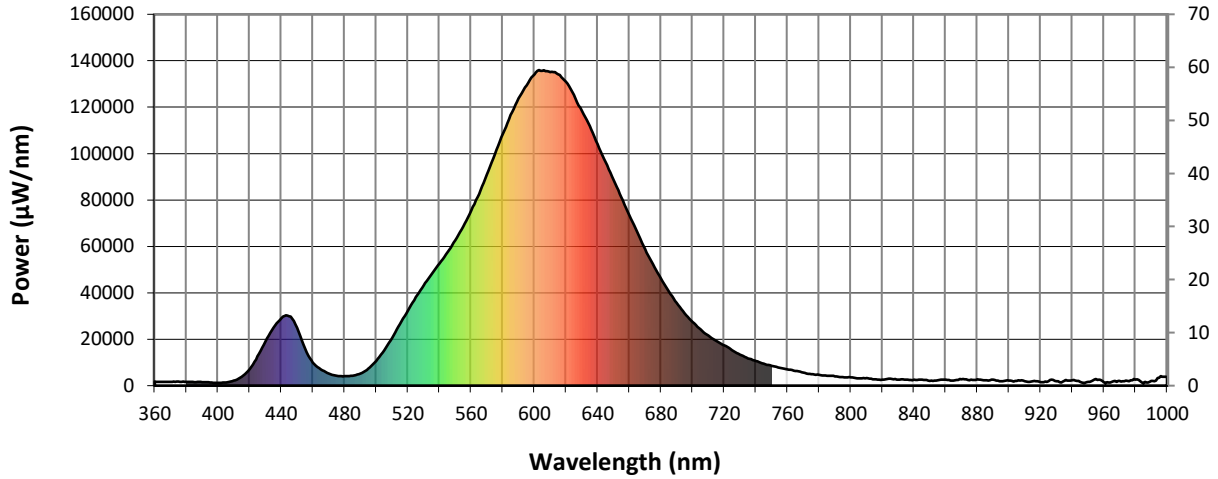


#####

| $\lambda$<br>(nm) | Power<br>( $\mu\text{W}/\text{nm}$ ) | Lumens<br>( $\phi/\text{nm}$ ) | $\lambda$<br>(nm) | Power<br>( $\mu\text{W}/\text{nm}$ ) | Lumens<br>( $\phi/\text{nm}$ ) | $\lambda$<br>(nm) | Power<br>( $\mu\text{W}/\text{nm}$ ) | Lumens<br>( $\phi/\text{nm}$ ) | $\lambda$<br>(nm) | Power<br>( $\mu\text{W}/\text{nm}$ ) | Lumens<br>( $\phi/\text{nm}$ ) | $\lambda$<br>(nm) | Power<br>( $\mu\text{W}/\text{nm}$ ) | Lumens<br>( $\phi/\text{nm}$ ) |
|-------------------|--------------------------------------|--------------------------------|-------------------|--------------------------------------|--------------------------------|-------------------|--------------------------------------|--------------------------------|-------------------|--------------------------------------|--------------------------------|-------------------|--------------------------------------|--------------------------------|
| 360               | 1768                                 | NR                             | 490               | 5206                                 | NR                             | 620               | 130919                               | NR                             | 750               | 8553                                 | NR                             | 880               | 2713                                 | NR                             |
| 365               | 1569                                 | NR                             | 495               | 7286                                 | NR                             | 625               | 125335                               | NR                             | 755               | 7696                                 | NR                             | 885               | 2316                                 | NR                             |
| 370               | 1594                                 | NR                             | 500               | 10654                                | NR                             | 630               | 118388                               | NR                             | 760               | 6978                                 | NR                             | 890               | 2539                                 | NR                             |
| 375               | 1744                                 | NR                             | 505               | 15189                                | NR                             | 635               | 111855                               | NR                             | 765               | 6377                                 | NR                             | 895               | 1933                                 | NR                             |
| 380               | 1659                                 | NR                             | 510               | 20541                                | NR                             | 640               | 104062                               | NR                             | 770               | 5600                                 | NR                             | 900               | 2216                                 | NR                             |
| 385               | 1504                                 | NR                             | 515               | 26492                                | NR                             | 645               | 96365                                | NR                             | 775               | 5000                                 | NR                             | 905               | 2067                                 | NR                             |
| 390               | 1541                                 | NR                             | 520               | 32294                                | NR                             | 650               | 88651                                | NR                             | 780               | 4709                                 | NR                             | 910               | 1959                                 | NR                             |
| 395               | 1355                                 | NR                             | 525               | 38123                                | NR                             | 655               | 81152                                | NR                             | 785               | 4305                                 | NR                             | 915               | 1874                                 | NR                             |
| 400               | 1243                                 | NR                             | 530               | 43232                                | NR                             | 660               | 73523                                | NR                             | 790               | 4040                                 | NR                             | 920               | 1484                                 | NR                             |
| 405               | 1417                                 | NR                             | 535               | 48012                                | NR                             | 665               | 66123                                | NR                             | 795               | 3642                                 | NR                             | 925               | 1914                                 | NR                             |
| 410               | 2147                                 | NR                             | 540               | 52623                                | NR                             | 670               | 58677                                | NR                             | 800               | 3594                                 | NR                             | 930               | 1948                                 | NR                             |
| 415               | 3837                                 | NR                             | 545               | 57516                                | NR                             | 675               | 52349                                | NR                             | 805               | 3190                                 | NR                             | 935               | 2079                                 | NR                             |
| 420               | 7159                                 | NR                             | 550               | 62613                                | NR                             | 680               | 46159                                | NR                             | 810               | 3241                                 | NR                             | 940               | 2263                                 | NR                             |
| 425               | 12599                                | NR                             | 555               | 68554                                | NR                             | 685               | 40525                                | NR                             | 815               | 2732                                 | NR                             | 945               | 1688                                 | NR                             |
| 430               | 19019                                | NR                             | 560               | 75325                                | NR                             | 690               | 35615                                | NR                             | 820               | 2612                                 | NR                             | 950               | 1560                                 | NR                             |
| 435               | 24875                                | NR                             | 565               | 82533                                | NR                             | 695               | 31158                                | NR                             | 825               | 2966                                 | NR                             | 955               | 2826                                 | NR                             |
| 440               | 29103                                | NR                             | 570               | 90909                                | NR                             | 700               | 27409                                | NR                             | 830               | 2574                                 | NR                             | 960               | 1477                                 | NR                             |
| 445               | 29901                                | NR                             | 575               | 99621                                | NR                             | 705               | 24204                                | NR                             | 835               | 2633                                 | NR                             | 965               | 1568                                 | NR                             |
| 450               | 24862                                | NR                             | 580               | 108484                               | NR                             | 710               | 21558                                | NR                             | 840               | 2526                                 | NR                             | 970               | 2030                                 | NR                             |
| 455               | 15942                                | NR                             | 585               | 116679                               | NR                             | 715               | 19222                                | NR                             | 845               | 2631                                 | NR                             | 975               | 1986                                 | NR                             |
| 460               | 9916                                 | NR                             | 590               | 123752                               | NR                             | 720               | 17310                                | NR                             | 850               | 2079                                 | NR                             | 980               | 2540                                 | NR                             |
| 465               | 7051                                 | NR                             | 595               | 129324                               | NR                             | 725               | 15280                                | NR                             | 855               | 2309                                 | NR                             | 985               | 1139                                 | NR                             |
| 470               | 5227                                 | NR                             | 600               | 134082                               | NR                             | 730               | 13282                                | NR                             | 860               | 2528                                 | NR                             | 990               | 2018                                 | NR                             |
| 475               | 4257                                 | NR                             | 605               | 135698                               | NR                             | 735               | 11753                                | NR                             | 865               | 2121                                 | NR                             | 995               | 3445                                 | NR                             |
| 480               | 4052                                 | NR                             | 610               | 135144                               | NR                             | 740               | 10654                                | NR                             | 870               | 2751                                 | NR                             | 1000              | 3704                                 | NR                             |
| 485               | 4298                                 | NR                             | 615               | 134180                               | NR                             | 745               | 9451                                 | NR                             | 875               | 2317                                 | NR                             |                   |                                      |                                |

REPORT NUMBER: SP1-1908-441-10-R4

**Scotopic Flux vs. Wavelength**



**Scotopic Lumens: 4696.9**

**S/P: 0.85**

| λ (nm) | Power (µW/nm) | Lumens (φ/nm) | λ (nm) | Power (µW/nm) | Lumens (φ/nm) | λ (nm) | Power (µW/nm) | Lumens (φ/nm) | λ (nm) | Power (µW/nm) | Lumens (φ/nm) | λ (nm) | Power (µW/nm) | Lumens (φ/nm) |
|--------|---------------|---------------|--------|---------------|---------------|--------|---------------|---------------|--------|---------------|---------------|--------|---------------|---------------|
| 360    | 1768          | NR            | 490    | 5206          | NR            | 620    | 130919        | NR            | 750    | 8553          | NR            | 880    | 2713          | NR            |
| 365    | 1569          | NR            | 495    | 7286          | NR            | 625    | 125335        | NR            | 755    | 7696          | NR            | 885    | 2316          | NR            |
| 370    | 1594          | NR            | 500    | 10654         | NR            | 630    | 118388        | NR            | 760    | 6978          | NR            | 890    | 2539          | NR            |
| 375    | 1744          | NR            | 505    | 15189         | NR            | 635    | 111855        | NR            | 765    | 6377          | NR            | 895    | 1933          | NR            |
| 380    | 1659          | NR            | 510    | 20541         | NR            | 640    | 104062        | NR            | 770    | 5600          | NR            | 900    | 2216          | NR            |
| 385    | 1504          | NR            | 515    | 26492         | NR            | 645    | 96365         | NR            | 775    | 5000          | NR            | 905    | 2067          | NR            |
| 390    | 1541          | NR            | 520    | 32294         | NR            | 650    | 88651         | NR            | 780    | 4709          | NR            | 910    | 1959          | NR            |
| 395    | 1355          | NR            | 525    | 38123         | NR            | 655    | 81152         | NR            | 785    | 4305          | NR            | 915    | 1874          | NR            |
| 400    | 1243          | NR            | 530    | 43232         | NR            | 660    | 73523         | NR            | 790    | 4040          | NR            | 920    | 1484          | NR            |
| 405    | 1417          | NR            | 535    | 48012         | NR            | 665    | 66123         | NR            | 795    | 3642          | NR            | 925    | 1914          | NR            |
| 410    | 2147          | NR            | 540    | 52623         | NR            | 670    | 58677         | NR            | 800    | 3594          | NR            | 930    | 1948          | NR            |
| 415    | 3837          | NR            | 545    | 57516         | NR            | 675    | 52349         | NR            | 805    | 3190          | NR            | 935    | 2079          | NR            |
| 420    | 7159          | NR            | 550    | 62613         | NR            | 680    | 46159         | NR            | 810    | 3241          | NR            | 940    | 2263          | NR            |
| 425    | 12599         | NR            | 555    | 68554         | NR            | 685    | 40525         | NR            | 815    | 2732          | NR            | 945    | 1688          | NR            |
| 430    | 19019         | NR            | 560    | 75325         | NR            | 690    | 35615         | NR            | 820    | 2612          | NR            | 950    | 1560          | NR            |
| 435    | 24875         | NR            | 565    | 82533         | NR            | 695    | 31158         | NR            | 825    | 2966          | NR            | 955    | 2826          | NR            |
| 440    | 29103         | NR            | 570    | 90909         | NR            | 700    | 27409         | NR            | 830    | 2574          | NR            | 960    | 1477          | NR            |
| 445    | 29901         | NR            | 575    | 99621         | NR            | 705    | 24204         | NR            | 835    | 2633          | NR            | 965    | 1568          | NR            |
| 450    | 24862         | NR            | 580    | 108484        | NR            | 710    | 21558         | NR            | 840    | 2526          | NR            | 970    | 2030          | NR            |
| 455    | 15942         | NR            | 585    | 116679        | NR            | 715    | 19222         | NR            | 845    | 2631          | NR            | 975    | 1986          | NR            |
| 460    | 9916          | NR            | 590    | 123752        | NR            | 720    | 17310         | NR            | 850    | 2079          | NR            | 980    | 2540          | NR            |
| 465    | 7051          | NR            | 595    | 129324        | NR            | 725    | 15280         | NR            | 855    | 2309          | NR            | 985    | 1139          | NR            |
| 470    | 5227          | NR            | 600    | 134082        | NR            | 730    | 13282         | NR            | 860    | 2528          | NR            | 990    | 2018          | NR            |
| 475    | 4257          | NR            | 605    | 135698        | NR            | 735    | 11753         | NR            | 865    | 2121          | NR            | 995    | 3445          | NR            |
| 480    | 4052          | NR            | 610    | 135144        | NR            | 740    | 10654         | NR            | 870    | 2751          | NR            | 1000   | 3704          | NR            |
| 485    | 4298          | NR            | 615    | 134180        | NR            | 745    | 9451          | NR            | 875    | 2317          | NR            |        |               |               |

REPORT NUMBER: SP1-1908-441-10-R4

**Melanopic Flux vs. Wavelength**



**Melanopic Lumens: 1470.8 M/P: 0.27**

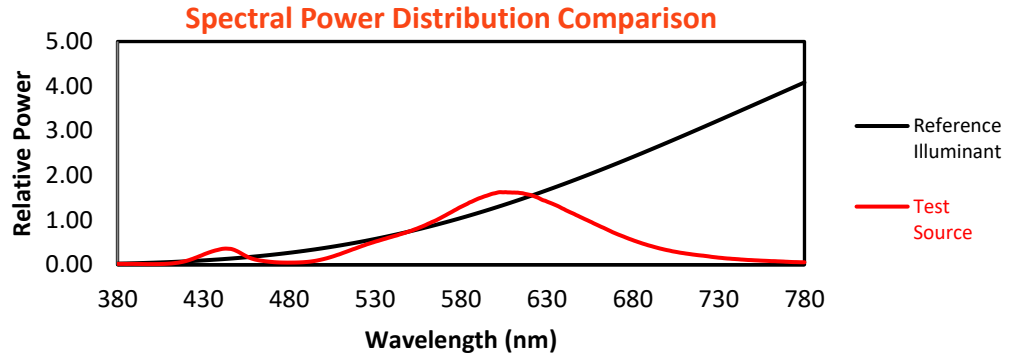
| λ (nm) | Power (µW/nm) | Lumens (φ/nm) | λ (nm) | Power (µW/nm) | Lumens (φ/nm) | λ (nm) | Power (µW/nm) | Lumens (φ/nm) | λ (nm) | Power (µW/nm) | Lumens (φ/nm) | λ (nm) | Power (µW/nm) | Lumens (φ/nm) |
|--------|---------------|---------------|--------|---------------|---------------|--------|---------------|---------------|--------|---------------|---------------|--------|---------------|---------------|
| 360    | 1768          | NR            | 490    | 5206          | NR            | 620    | 130919        | NR            | 750    | 8553          | NR            | 880    | 2713          | NR            |
| 365    | 1569          | NR            | 495    | 7286          | NR            | 625    | 125335        | NR            | 755    | 7696          | NR            | 885    | 2316          | NR            |
| 370    | 1594          | NR            | 500    | 10654         | NR            | 630    | 118388        | NR            | 760    | 6978          | NR            | 890    | 2539          | NR            |
| 375    | 1744          | NR            | 505    | 15189         | NR            | 635    | 111855        | NR            | 765    | 6377          | NR            | 895    | 1933          | NR            |
| 380    | 1659          | NR            | 510    | 20541         | NR            | 640    | 104062        | NR            | 770    | 5600          | NR            | 900    | 2216          | NR            |
| 385    | 1504          | NR            | 515    | 26492         | NR            | 645    | 96365         | NR            | 775    | 5000          | NR            | 905    | 2067          | NR            |
| 390    | 1541          | NR            | 520    | 32294         | NR            | 650    | 88651         | NR            | 780    | 4709          | NR            | 910    | 1959          | NR            |
| 395    | 1355          | NR            | 525    | 38123         | NR            | 655    | 81152         | NR            | 785    | 4305          | NR            | 915    | 1874          | NR            |
| 400    | 1243          | NR            | 530    | 43232         | NR            | 660    | 73523         | NR            | 790    | 4040          | NR            | 920    | 1484          | NR            |
| 405    | 1417          | NR            | 535    | 48012         | NR            | 665    | 66123         | NR            | 795    | 3642          | NR            | 925    | 1914          | NR            |
| 410    | 2147          | NR            | 540    | 52623         | NR            | 670    | 58677         | NR            | 800    | 3594          | NR            | 930    | 1948          | NR            |
| 415    | 3837          | NR            | 545    | 57516         | NR            | 675    | 52349         | NR            | 805    | 3190          | NR            | 935    | 2079          | NR            |
| 420    | 7159          | NR            | 550    | 62613         | NR            | 680    | 46159         | NR            | 810    | 3241          | NR            | 940    | 2263          | NR            |
| 425    | 12599         | NR            | 555    | 68554         | NR            | 685    | 40525         | NR            | 815    | 2732          | NR            | 945    | 1688          | NR            |
| 430    | 19019         | NR            | 560    | 75325         | NR            | 690    | 35615         | NR            | 820    | 2612          | NR            | 950    | 1560          | NR            |
| 435    | 24875         | NR            | 565    | 82533         | NR            | 695    | 31158         | NR            | 825    | 2966          | NR            | 955    | 2826          | NR            |
| 440    | 29103         | NR            | 570    | 90909         | NR            | 700    | 27409         | NR            | 830    | 2574          | NR            | 960    | 1477          | NR            |
| 445    | 29901         | NR            | 575    | 99621         | NR            | 705    | 24204         | NR            | 835    | 2633          | NR            | 965    | 1568          | NR            |
| 450    | 24862         | NR            | 580    | 108484        | NR            | 710    | 21558         | NR            | 840    | 2526          | NR            | 970    | 2030          | NR            |
| 455    | 15942         | NR            | 585    | 116679        | NR            | 715    | 19222         | NR            | 845    | 2631          | NR            | 975    | 1986          | NR            |
| 460    | 9916          | NR            | 590    | 123752        | NR            | 720    | 17310         | NR            | 850    | 2079          | NR            | 980    | 2540          | NR            |
| 465    | 7051          | NR            | 595    | 129324        | NR            | 725    | 15280         | NR            | 855    | 2309          | NR            | 985    | 1139          | NR            |
| 470    | 5227          | NR            | 600    | 134082        | NR            | 730    | 13282         | NR            | 860    | 2528          | NR            | 990    | 2018          | NR            |
| 475    | 4257          | NR            | 605    | 135698        | NR            | 735    | 11753         | NR            | 865    | 2121          | NR            | 995    | 3445          | NR            |
| 480    | 4052          | NR            | 610    | 135144        | NR            | 740    | 10654         | NR            | 870    | 2751          | NR            | 1000   | 3704          | NR            |
| 485    | 4298          | NR            | 615    | 134180        | NR            | 745    | 9451          | NR            | 875    | 2317          | NR            |        |               |               |

REPORT NUMBER: SP1-1908-441-10-R4

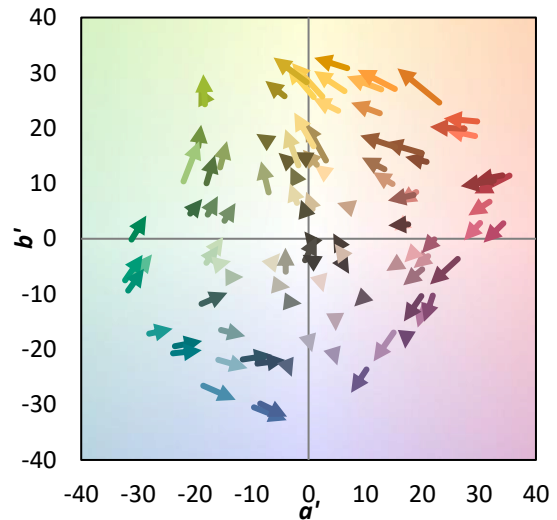
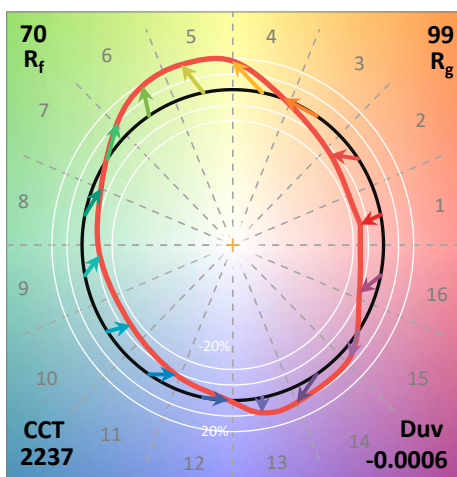
TM-30-18

**Summary**

$R_f = 69.8$   
 $R_g = 99.2$   
 $CIE R_a = 72.0$   
 $R_g = -17.4$



**Color Vector Graphics**



REPORT NUMBER: SP1-1908-441-10-R4

TM-30-18

**Individual Sample Fidelity Index ( $R_{f,i}$ )**

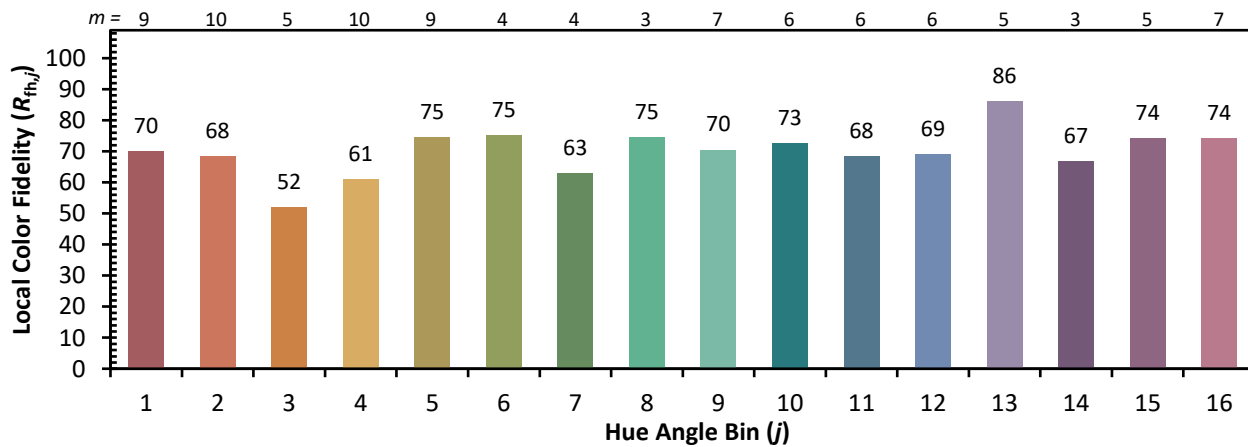
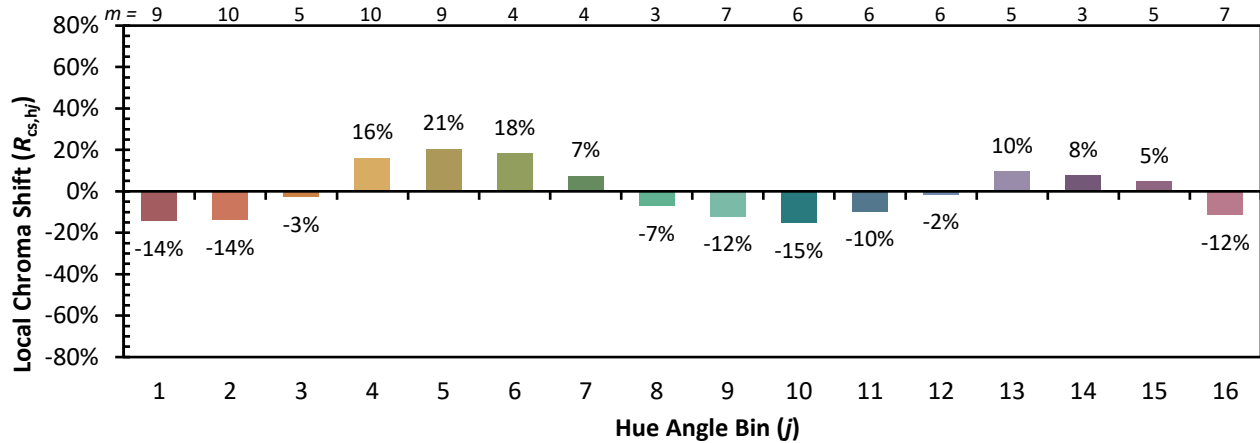
|            |            |            |            |
|------------|------------|------------|------------|
| CES01 = 87 | CES26 = 56 | CES51 = 74 | CES76 = 56 |
| CES02 = 65 | CES27 = 76 | CES52 = 76 | CES77 = 81 |
| CES03 = 32 | CES28 = 83 | CES53 = 65 | CES78 = 63 |
| CES04 = 72 | CES29 = 46 | CES54 = 78 | CES79 = 84 |
| CES05 = 52 | CES30 = 48 | CES55 = 75 | CES80 = 84 |
| CES06 = 52 | CES31 = 51 | CES56 = 65 | CES81 = 63 |
| CES07 = 44 | CES32 = 51 | CES57 = 62 | CES82 = 92 |
| CES08 = 42 | CES33 = 53 | CES58 = 66 | CES83 = 83 |
| CES09 = 29 | CES34 = 70 | CES59 = 84 | CES84 = 92 |
| CES10 = 78 | CES35 = 85 | CES60 = 90 | CES85 = 81 |
| CES11 = 61 | CES36 = 78 | CES61 = 84 | CES86 = 56 |
| CES12 = 68 | CES37 = 80 | CES62 = 70 | CES87 = 78 |
| CES13 = 45 | CES38 = 53 | CES63 = 68 | CES88 = 72 |
| CES14 = 75 | CES39 = 90 | CES64 = 69 | CES89 = 62 |
| CES15 = 72 | CES40 = 84 | CES65 = 67 | CES90 = 67 |
| CES16 = 49 | CES41 = 75 | CES66 = 64 | CES91 = 90 |
| CES17 = 51 | CES42 = 79 | CES67 = 63 | CES92 = 67 |
| CES18 = 57 | CES43 = 64 | CES68 = 69 | CES93 = 79 |
| CES19 = 74 | CES44 = 98 | CES69 = 80 | CES94 = 52 |
| CES20 = 68 | CES45 = 73 | CES70 = 63 | CES95 = 76 |
| CES21 = 89 | CES46 = 67 | CES71 = 63 | CES96 = 78 |
| CES22 = 81 | CES47 = 60 | CES72 = 87 | CES97 = 77 |
| CES23 = 92 | CES48 = 48 | CES73 = 56 | CES98 = 71 |
| CES24 = 92 | CES49 = 64 | CES74 = 87 | CES99 = 65 |
| CES25 = 74 | CES50 = 74 | CES75 = 66 |            |



REPORT NUMBER: SP1-1908-441-10-R4

TM-30-18

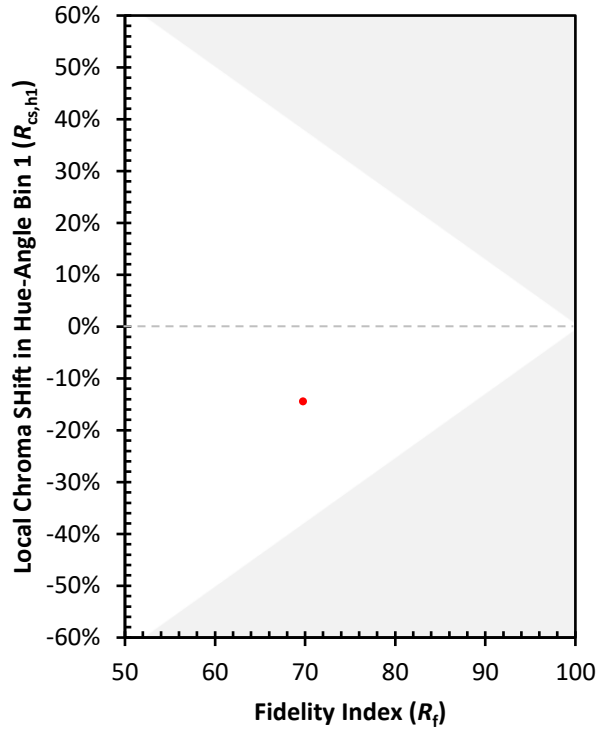
Color Rendition by Hue-Angle Bin



REPORT NUMBER: SP1-1908-441-10-R4

TM-30-18

Measure Comparisons



(END OF REPORT)